

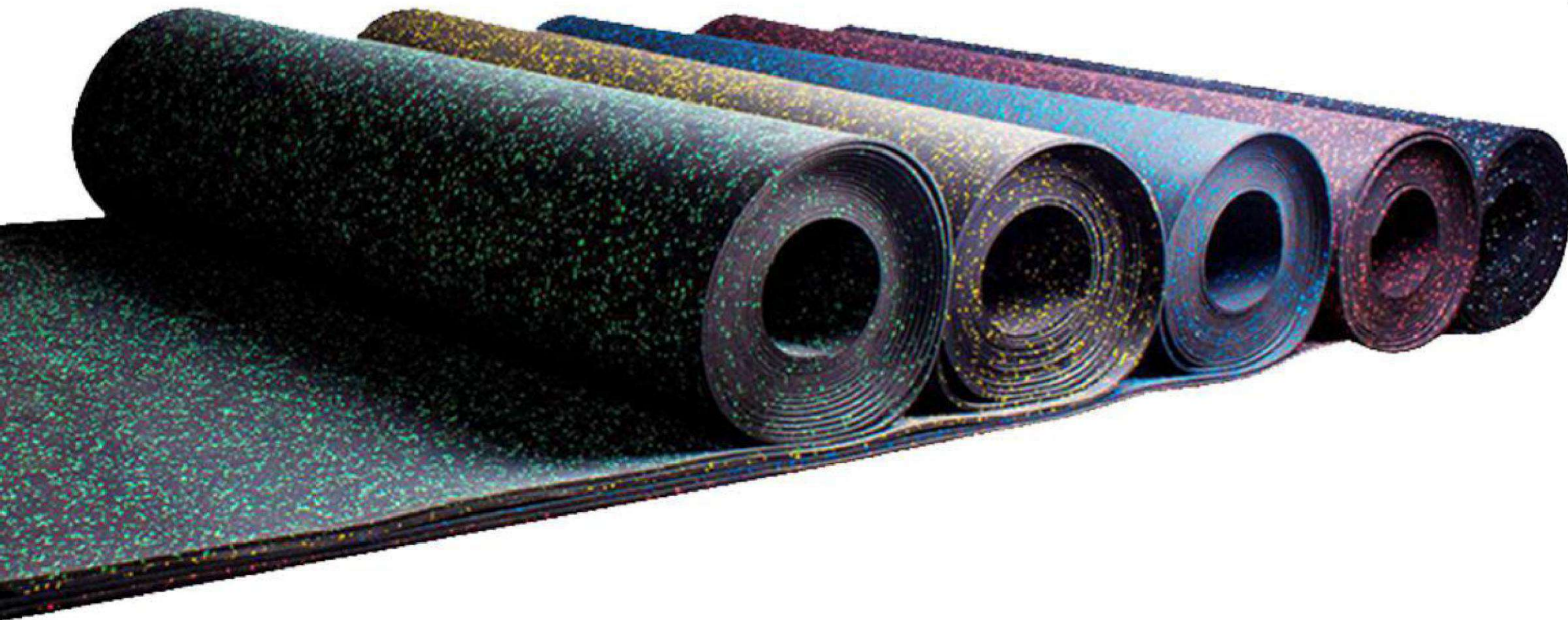
FAB GULF TRADING LLC



Protect your **equipment**
& users with the best rubber flooring

Comfort of gym,
& high -traffic areas

2024 | Version: 1.0



“ In spaces where life's rhythm beats and roars,
Where feet and paws traverse the floors,
There lies a secret, a comfort rare,
Beneath our steps, a rubbery affair.

Rubber flooring, unassuming grace,
In every corner, it finds its place,
A cushioned haven for our soles,
Where comfort and durability truly unfolds.

In gyms, it bears the weight of dreams,
As athletes sweat and push their seams,
Bouncing back with each impact and fall,
Rubber flooring, the champion of all.

In playgrounds, where children play and roam,
Rubber ensures they're safe at home,
Soft landing for each jump and slide,
Where laughter and joy forever reside.

In playgrounds, where children play and roam,
Rubber ensures they're safe at home,
Soft landing for each jump and slide,
Where laughter and joy forever reside.

In hospitals, where healing's the aim,
Rubber's a guardian in this noble game,
Absorbing shocks, reducing strain,
A silent hero in the midst of pain.

Oh, rubber flooring, with your quiet grace,
You make the world a better place,
A surface that offers comfort and care,
In every step, you're always there.

So let us celebrate this humble floor,
A resilient ally we can't ignore,
In homes and spaces, big and small,
Rubber flooring, you conquer all.

By Fab Flooring ”

CONTENTS

RUBBER ROLL

RUBBER ROLLS	6
EPDM RUBBER ROLLS	8
GREY RUBBER ROLLS	10

CLASSIC TILE

CLASSIC V.GROOVE TILE	12
CLASSIC INTERLOCKING TILE	14
CLASSIC EPDM TILE	16

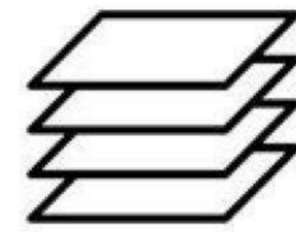
LAMINATED

LAMINATED TILE	18
LAMINATED INTERLOCKING TILE	20

OTHER TILES

PREMIUM TILE	22
HEXAGON TILE	24
BALLISTIC TILE	26
EPDM SANDWICH TILE	28

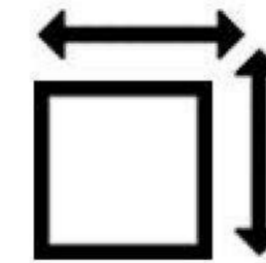
RUBBER ROLLS



Thicknesses :- 2mm, 4mm, 6mm, 8mm & 10mm

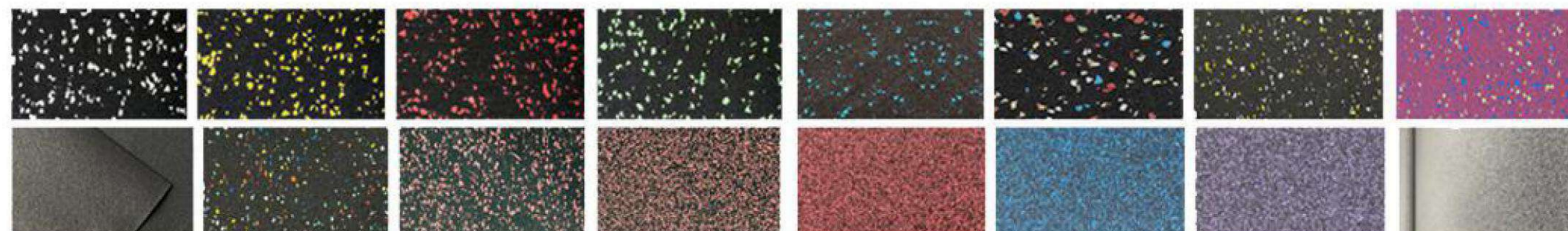


Size :- 1mtr X 10mtr



Area Coverage :- 107.64 sqft per roll

AVAILABLE COLOURS

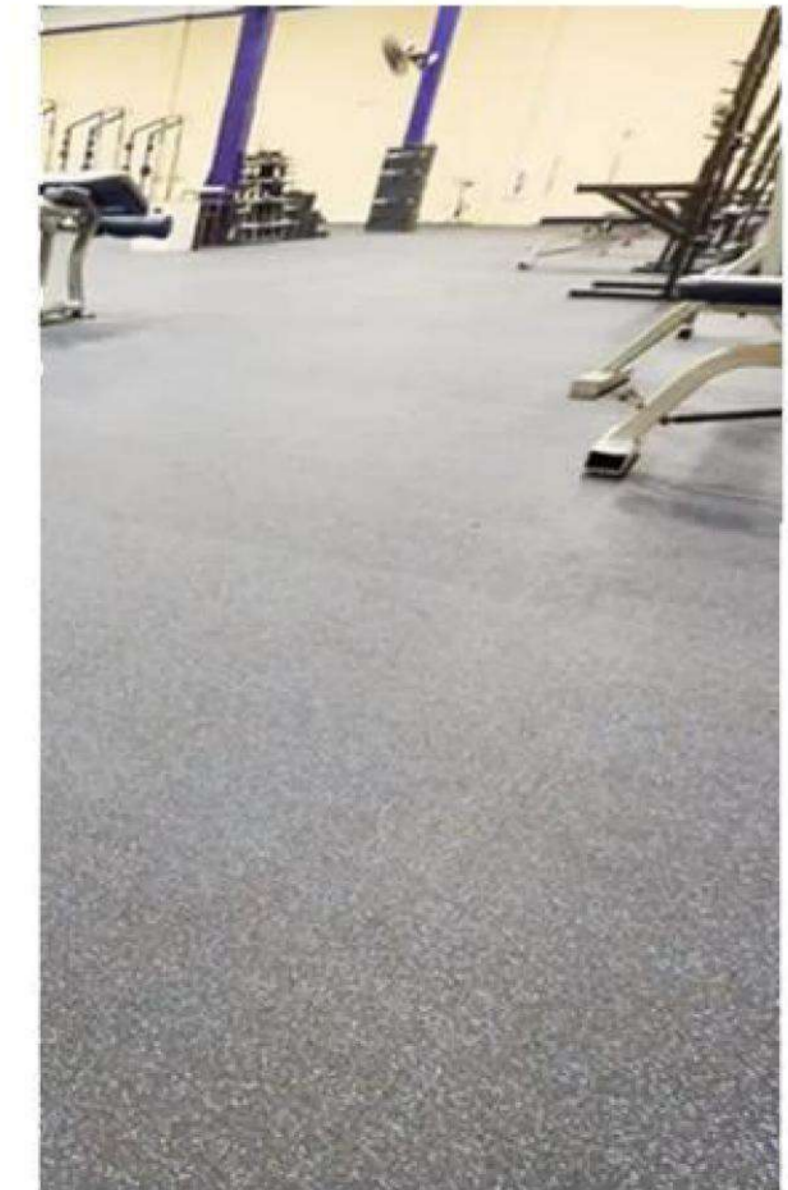
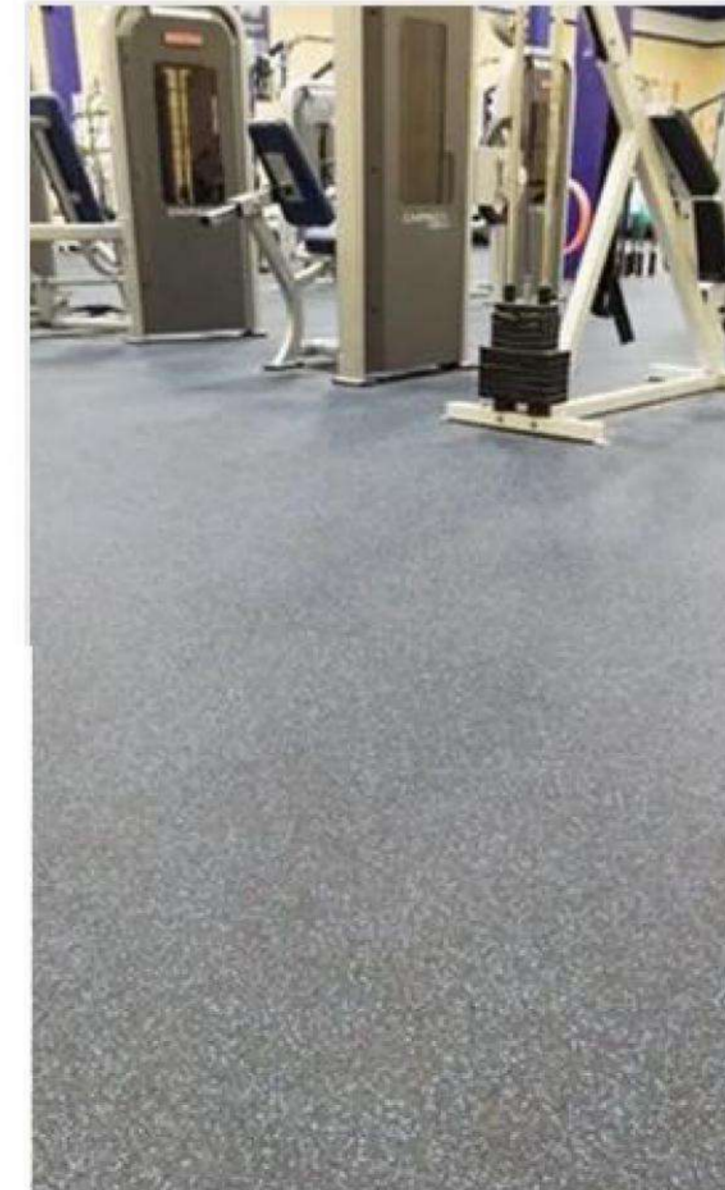
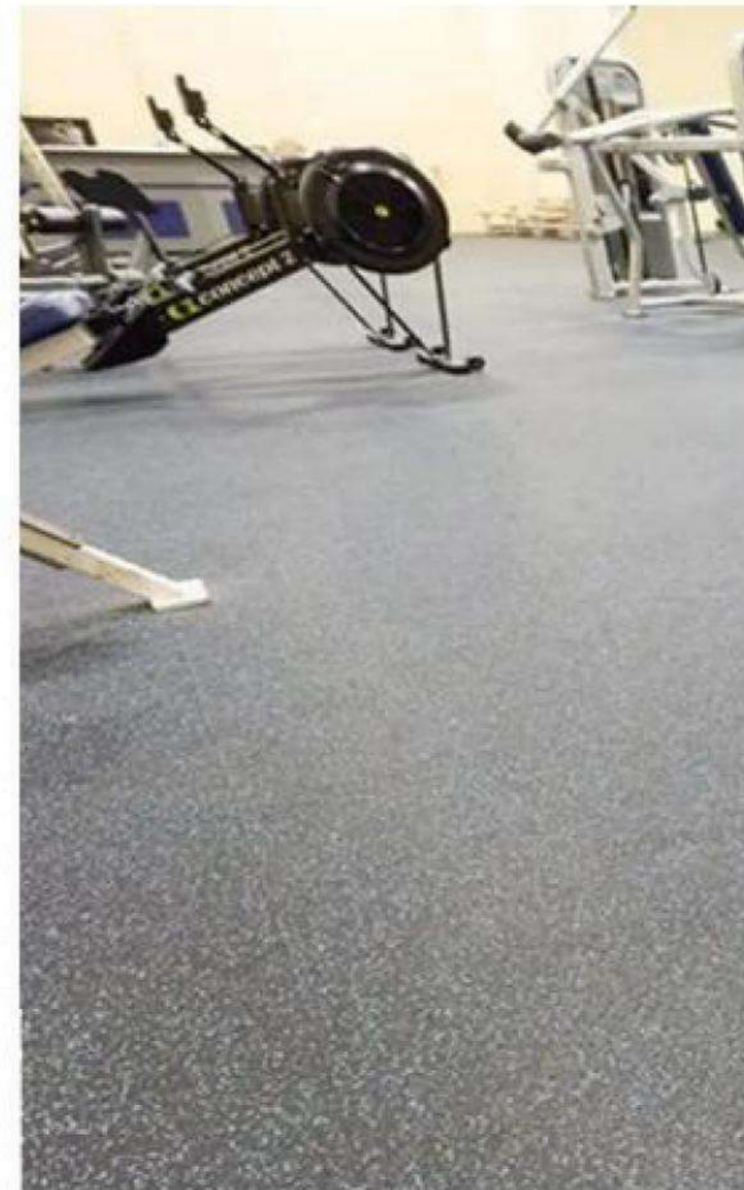


- ✓ Upgrade your gym or home fitness space with durable rubber rolls flooring. India's Leading Manufacturer and Supplier of rubber floorings rolls. We produce best quality rubber rolls in a size of 1x10 meters with various color options.

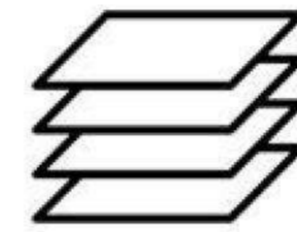
APPLICATION

- ✓ **Uses:** gyms, fitness centers, sports facilities and other high-traffic areas
- ✓ **Benefits:** Noise reduction, Slip resistance, Shock absorption, long-lasting performance, Easy maintenance.

OUR PROJECTS



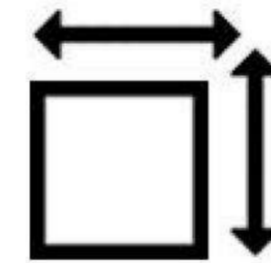
EPDM RUBBER ROLLS



Thicknesses :- 8mm & 10mm

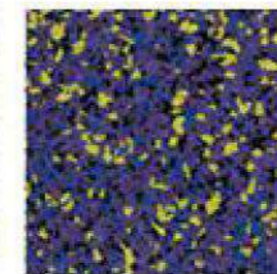
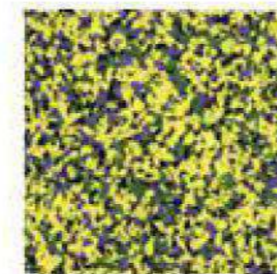
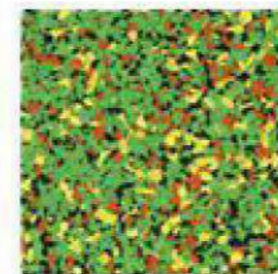
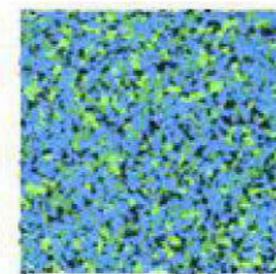
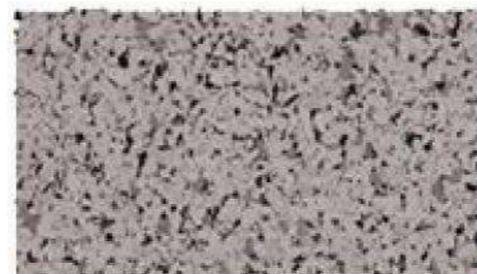
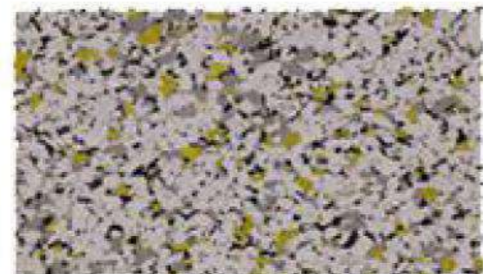


Size :- 1mtr X 10mtr



Area Coverage :- 107.64sqft per roll

AVAILABLE COLOURS

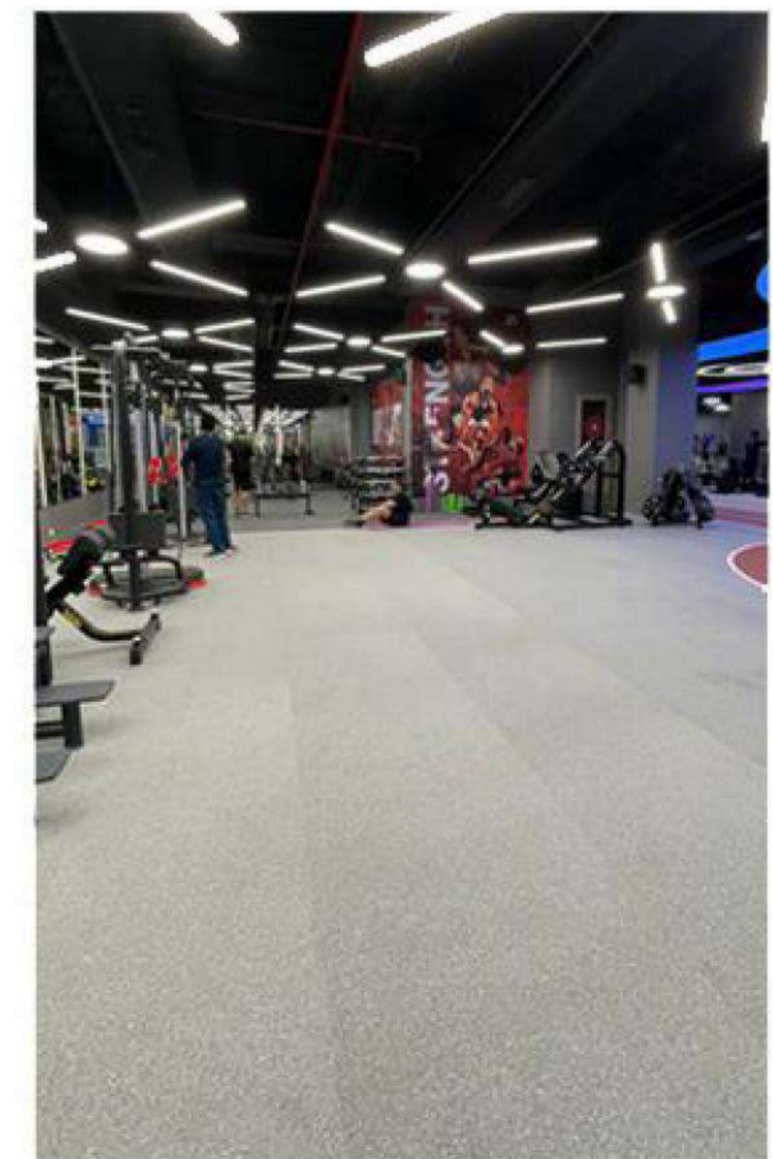
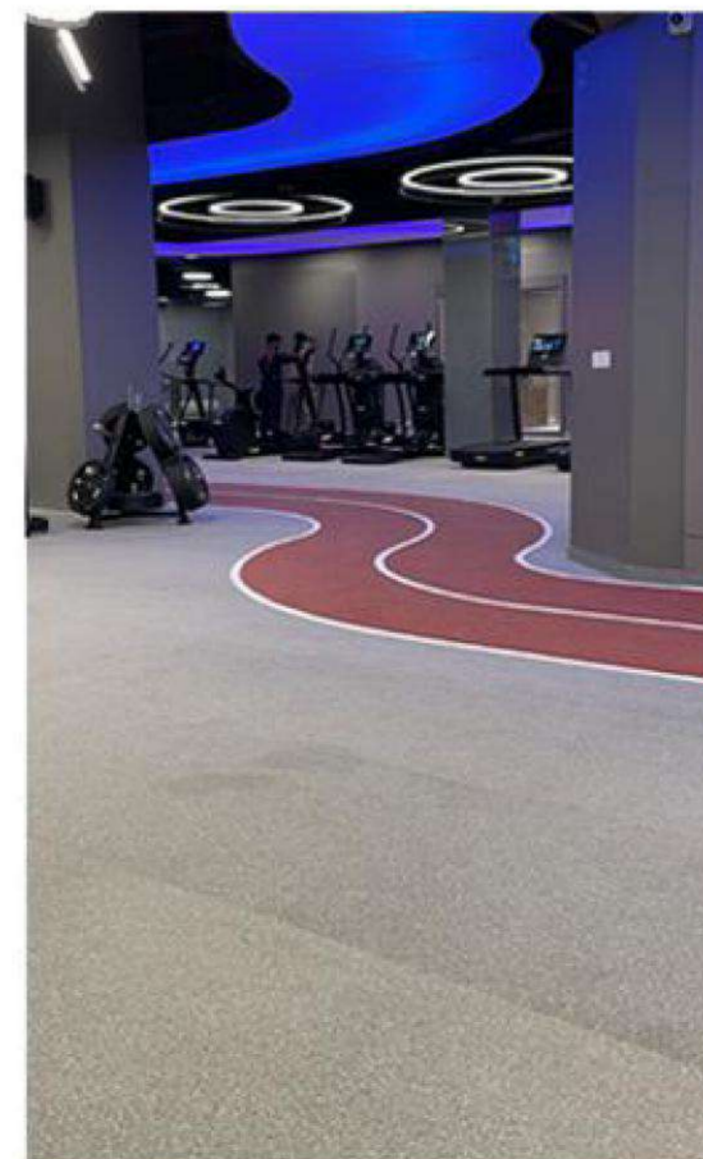


- ✓ Buy the best highest quality of EPDM rubber rolls flooring matt, excellent anti-slip. Easy to clean and maintain, water-resistant. Epdm rubber rolls are a highly versatile and durable flooring option.

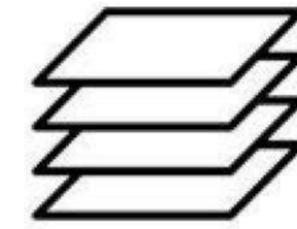
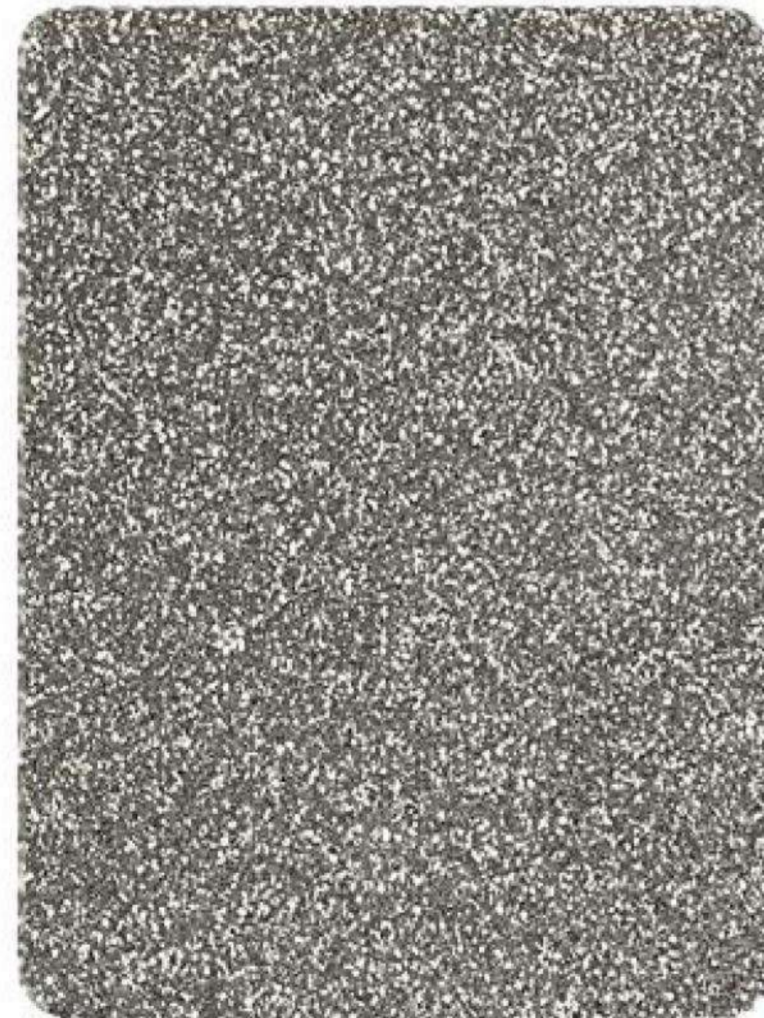
APPLICATION

- ✓ Uses: Gyms, fitness center, sports facilities and other high-traffic areas.
- ✓ Benefits: Noise reduction, Slip resistance, Shock absorption, long-lasting performance, Easy maintenance.

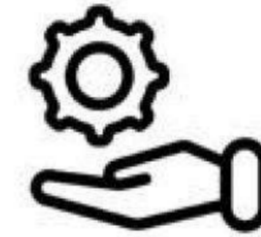
OUR PROJECTS



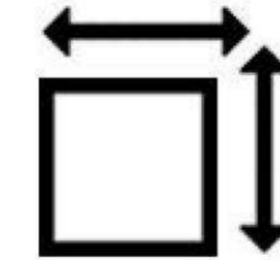
GREY RUBBER ROLLS



Thicknesses :- 4mm, 6mm, 8mm & 10mm

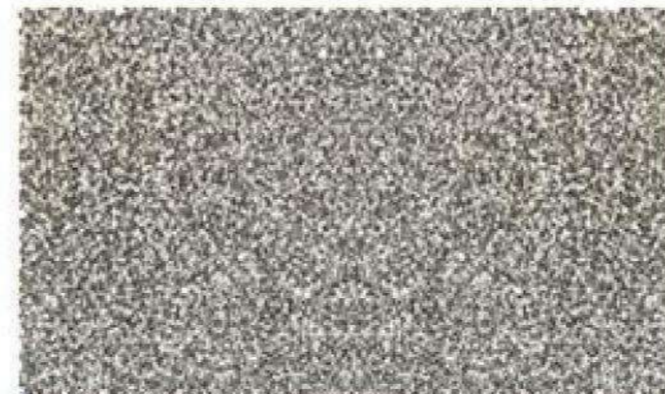


Size :- 1mtr X 10mtr



Area Coverage :- 107.64sqft per roll

AVAILABLE COLOURS

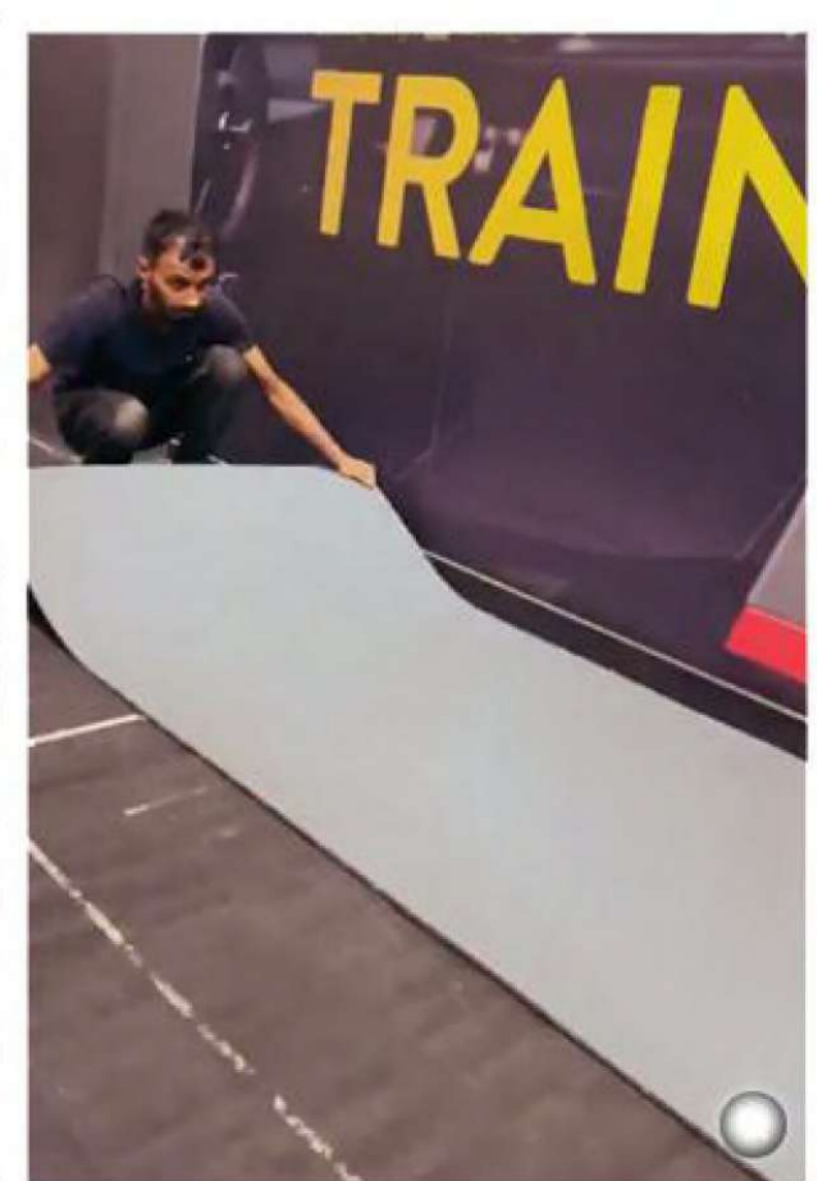
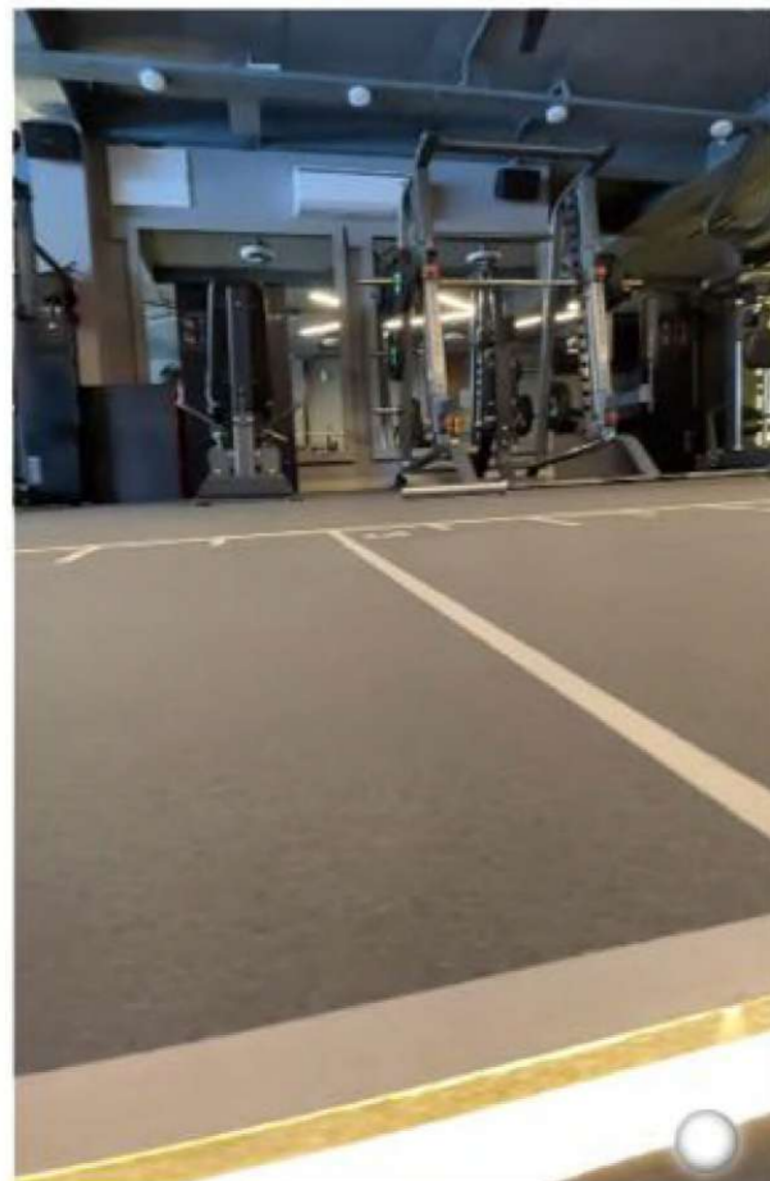
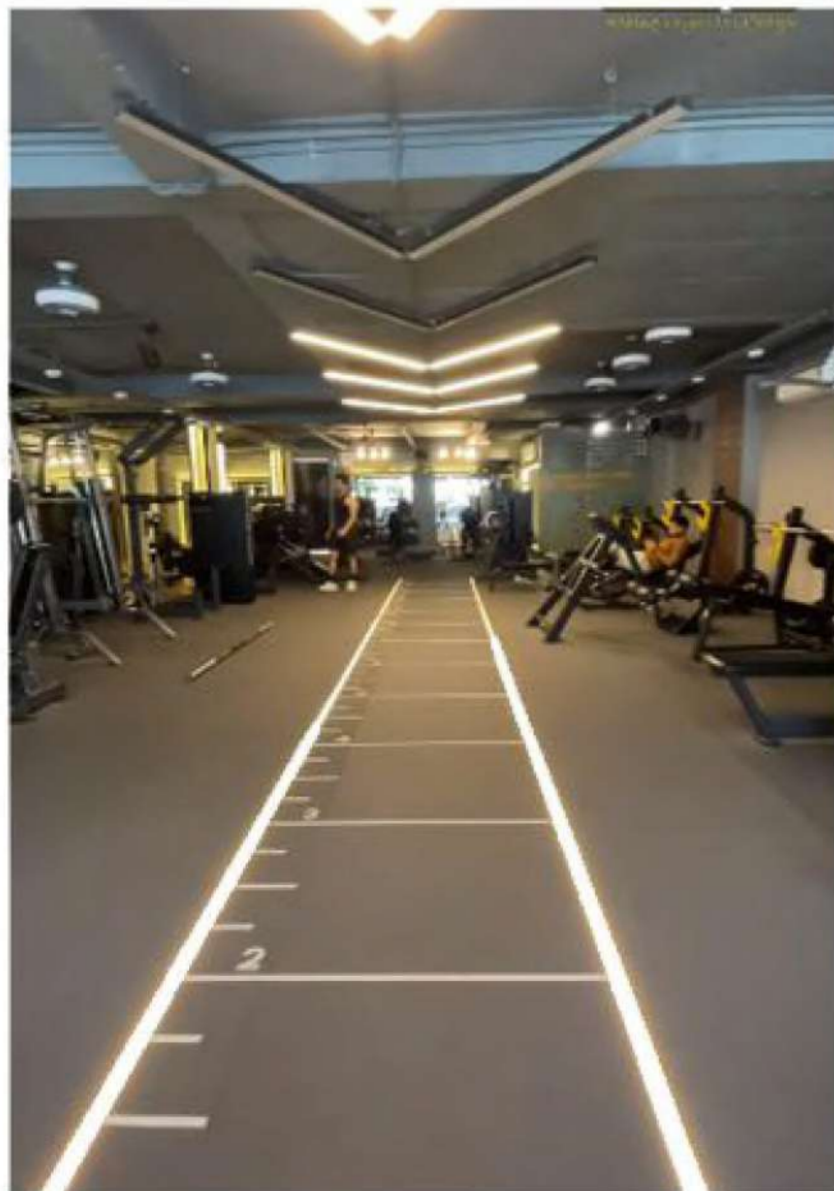


- ✓ **Our grey color rubber rolls** are slip-resistant, providing a secure surface for walking and exercising. Upgrade your floors with grey colour rubber rolls floorings for playground, outdoor, walkway. It's extremely anti-slip and purely made from recycled rubber.

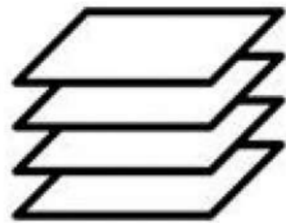
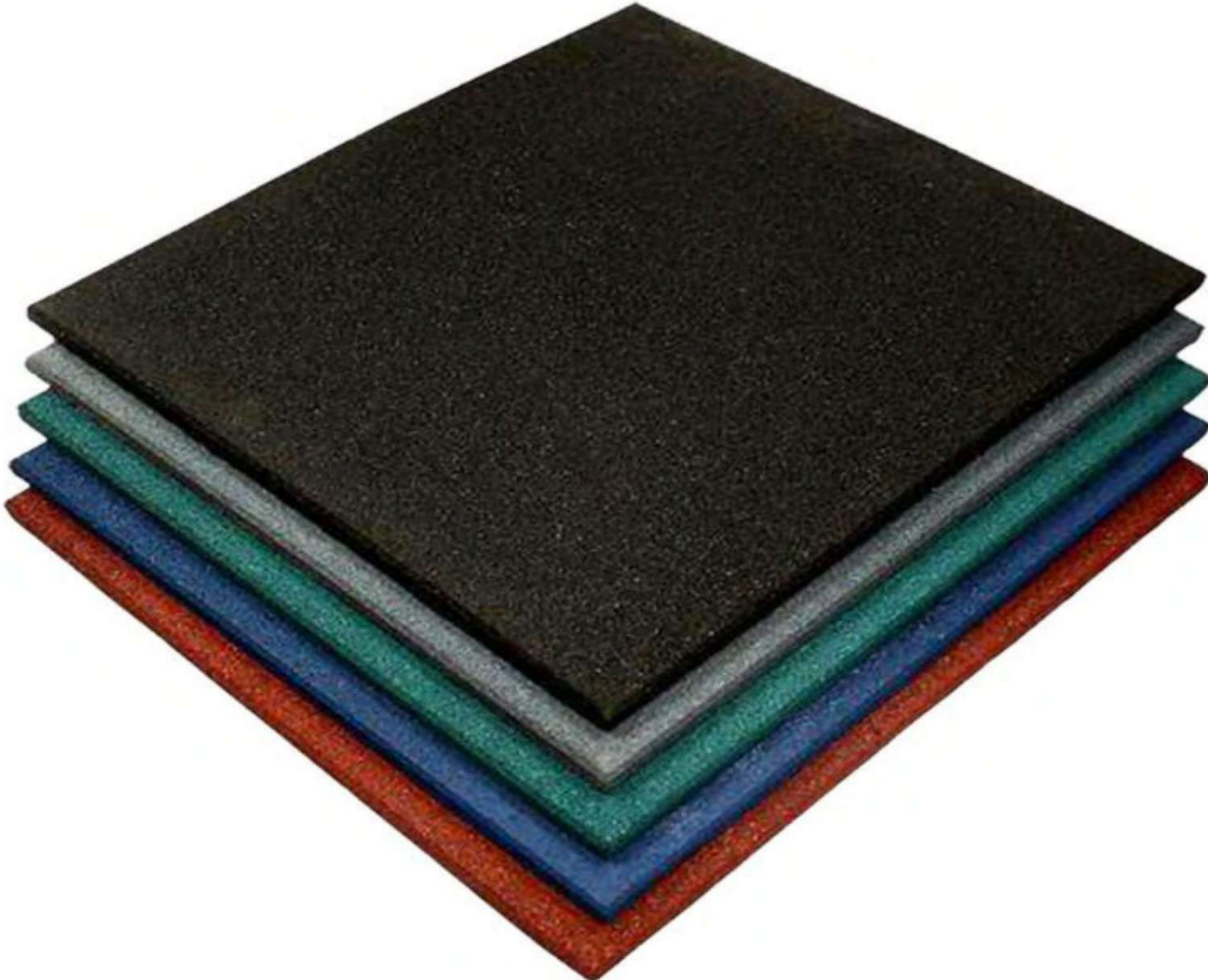
APPLICATION

- ✓ **Uses:** Gyms, fitness center, sports facilities and other high-traffic areas.
- ✓ **Benefits:** Noise reduction, Slip resistance, Shock absorption, long-lasting performance, Easy maintenance.

OUR PROJECTS



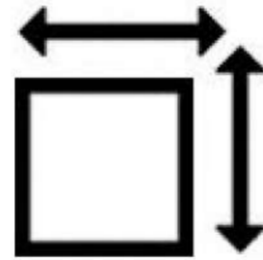
CLASSIC V.GROOVE RUBBER TILES



Thicknesses :- 10mm, 15mm, 20mm, 25mm, 30mm, 35mm, 40mm & 50mm.



Size :- 20X20 Inch (508X508mm) & 1mtr X 1mtr



Area Coverage :- 2.77sqft per tile

AVAILABLE COLOURS

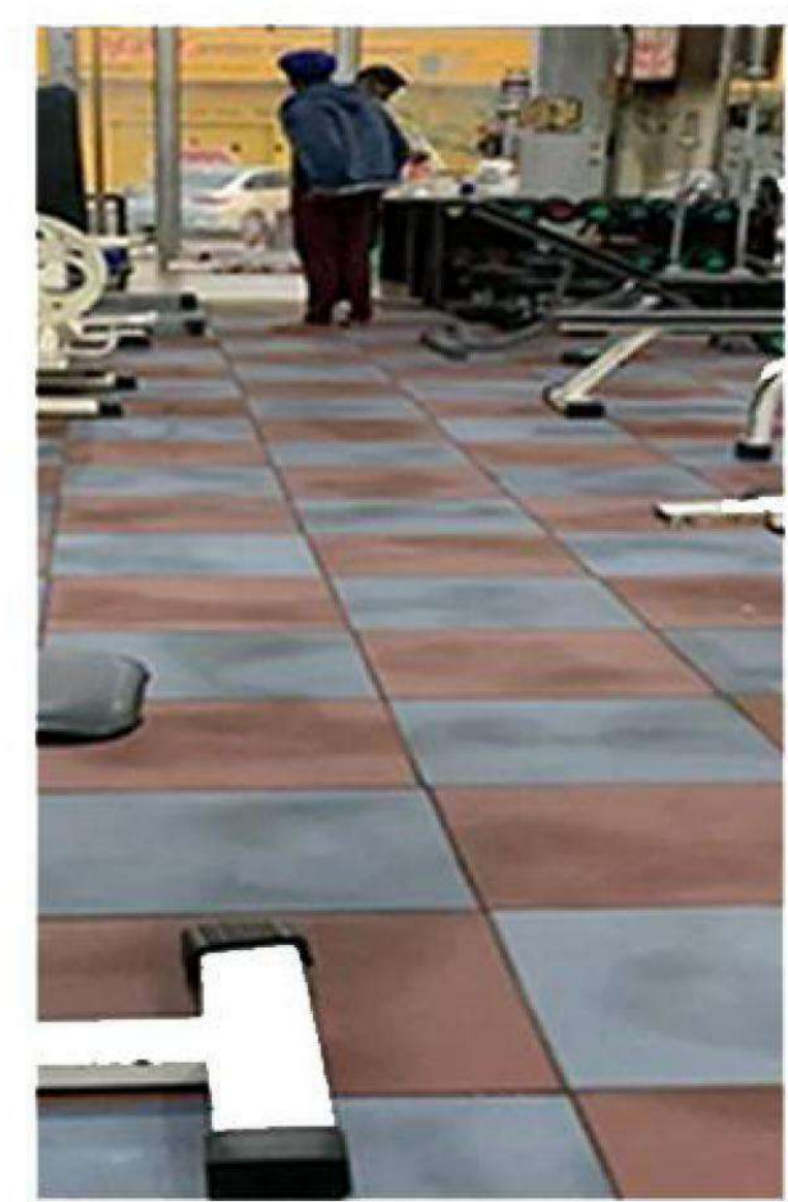
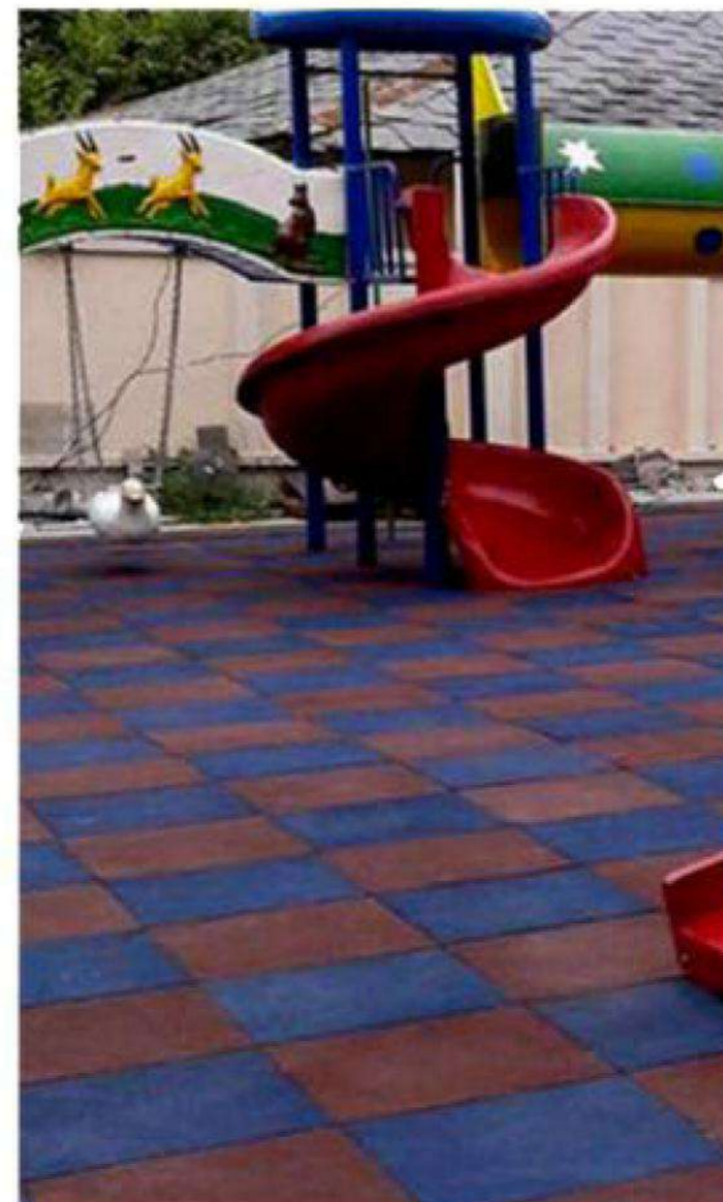


- ✓ **Classic V-Groove rubber tiles** have a slip-resistant surface, which makes them a safe choice for areas where water or other liquids may be present. They also have some shock-absorbing properties, which makes them an ideal choice for areas where people will be jumping or running.

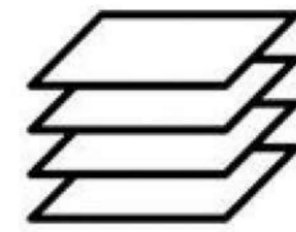
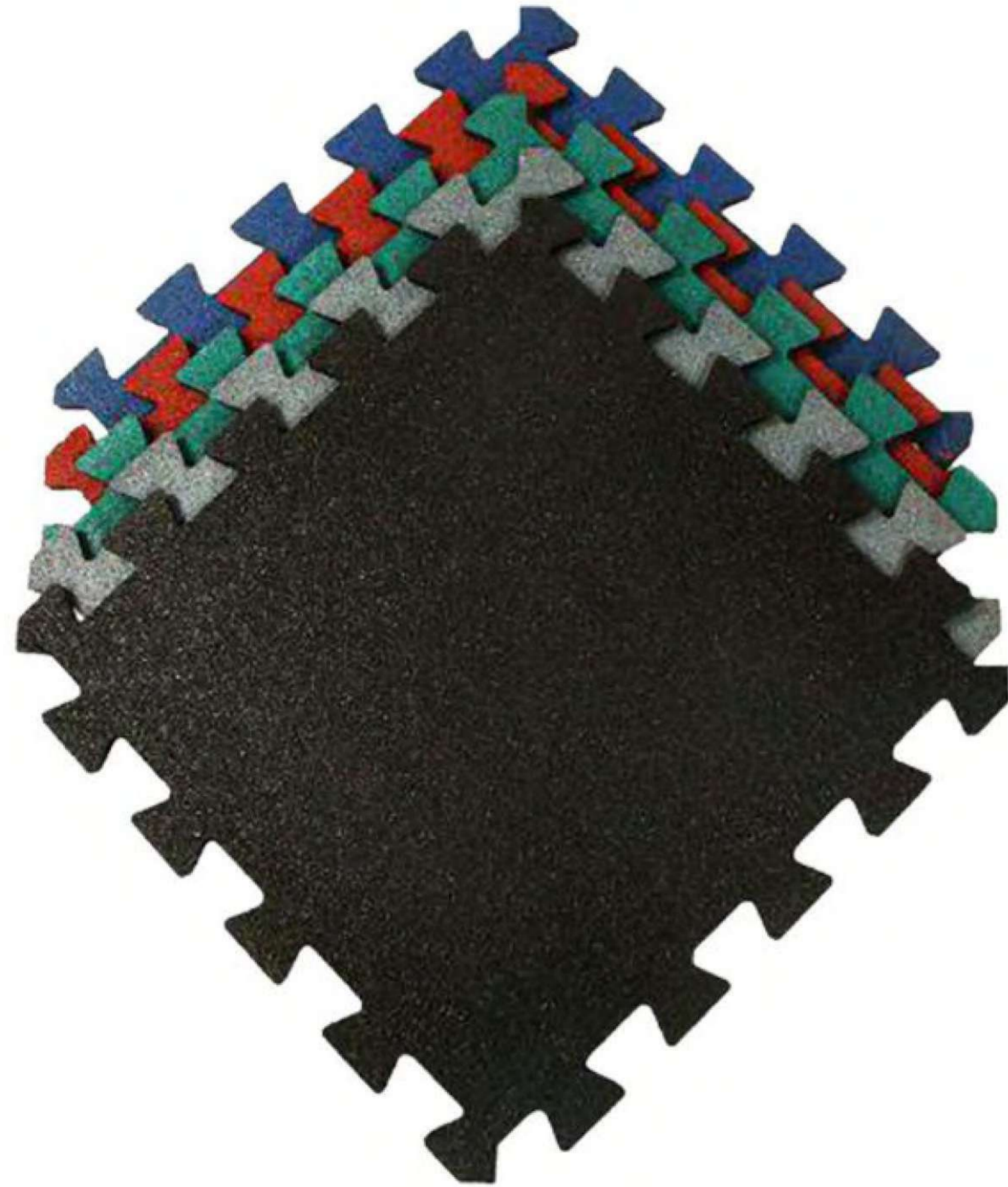
APPLICATION

- ✓ **Uses:** gyms, fitness centers, sports facilities, play area and other high-traffic areas
- ✓ **Benefits:** Noise reduction, Slip resistance, Shock absorption, long-lasting performance, Easy maintenance.

OUR PROJECTS



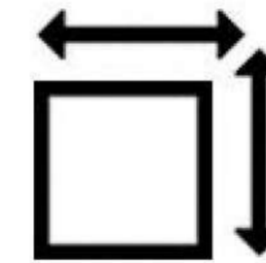
CLASSIC INTERLOCKING RUBBER TILES



Thicknesses :- 10mm & 15mm

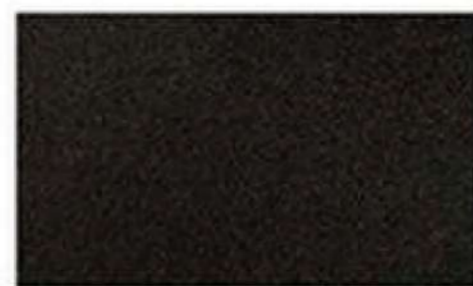


Size :- 20X20 Inch (508X508mm) & 1mtr X 1mtr



Area Coverage :- 2.77sqft per tile

AVAILABLE COLOURS

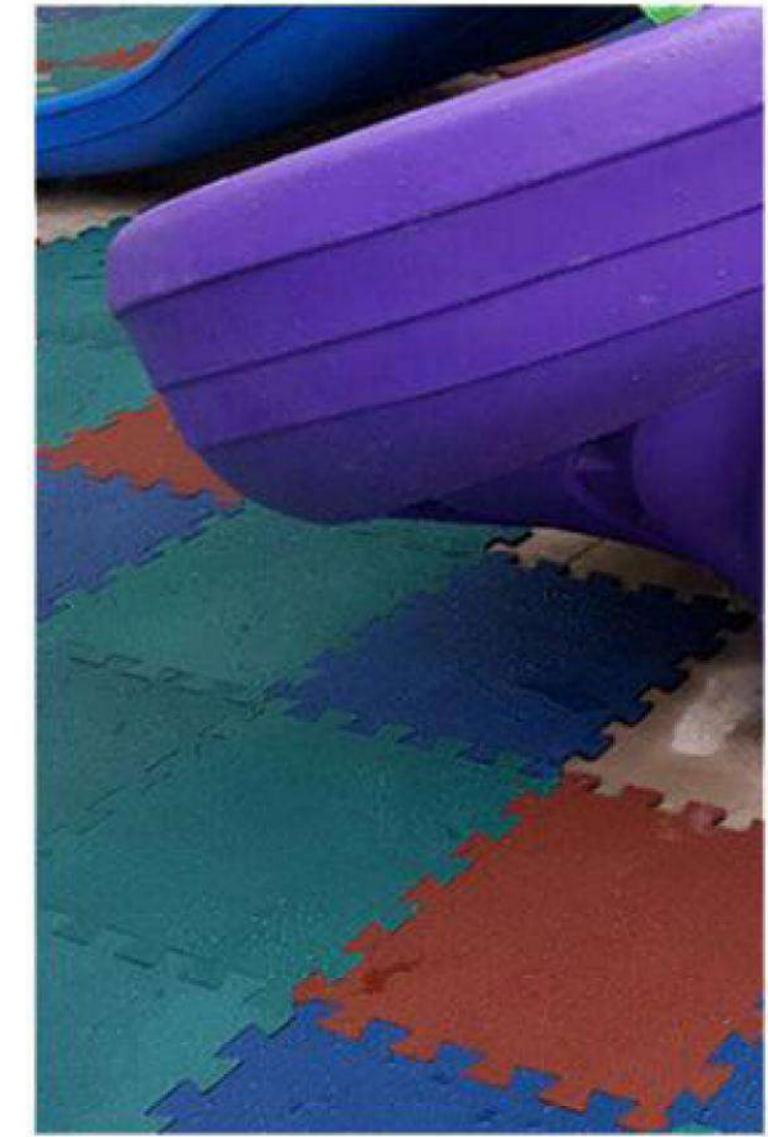
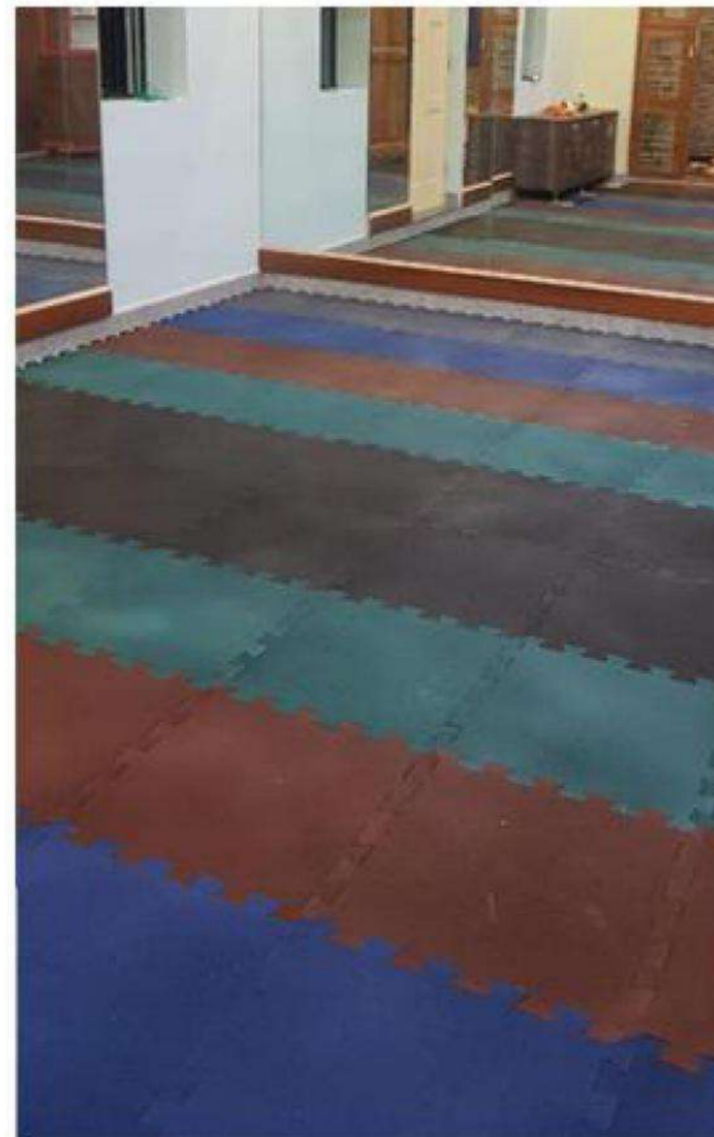


- ✓ **Classic interlocking rubber tiles** are commonly used for gym flooring due to their durability, shock absorption, and easy installation. Upgrade your flooring with Classic Interlocking Rubber Tiles. Enjoy durability, slip resistance, and enhanced style for a safer. Easy to install, easy to clean!

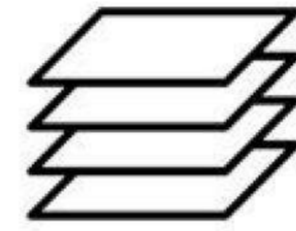
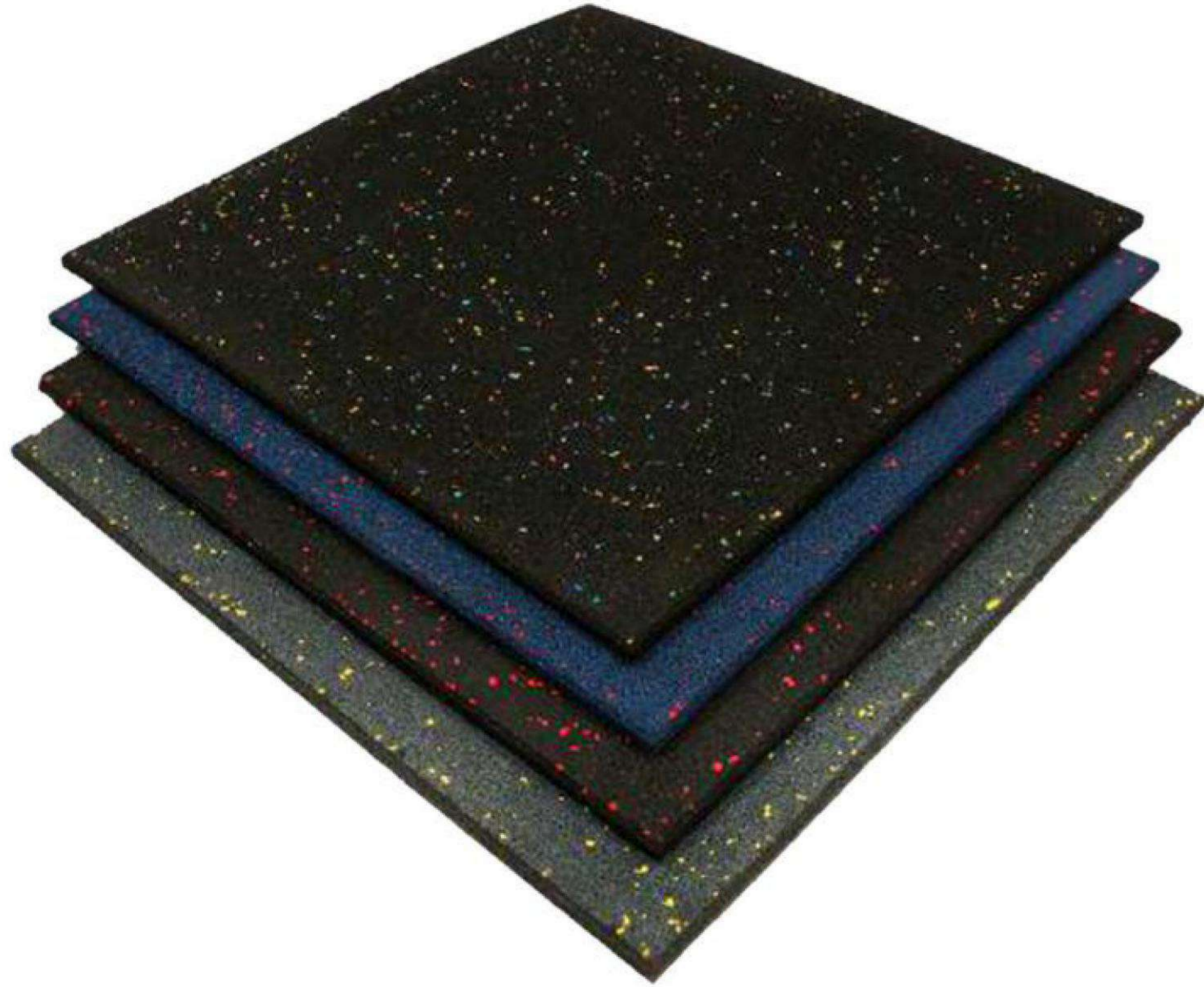
APPLICATION

- ✓ **Uses:** gyms, fitness centers, sports facilities, play area and other high-traffic areas
- ✓ **Benefits:** Noise reduction, Slip resistance, Shock absorption, long-lasting performance, Easy maintenance.

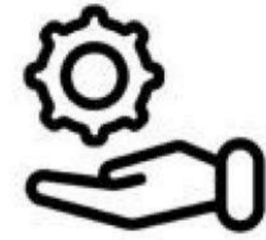
OUR PROJECTS



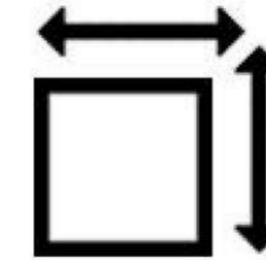
CLASSIC EPDM RUBBER TILES



Thicknesses :- 10mm, 15mm, 20mm, 25mm
30mm, 35mm, 40mm & 50mm.

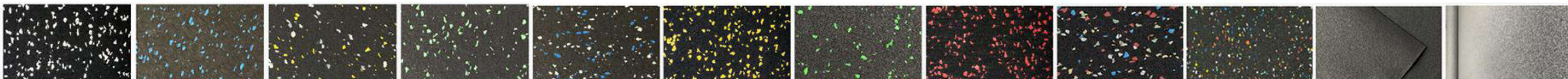


Size :- 20X20 Inch (508X508mm)



Area Coverage :- 2.77sqft per tile

AVAILABLE COLOURS

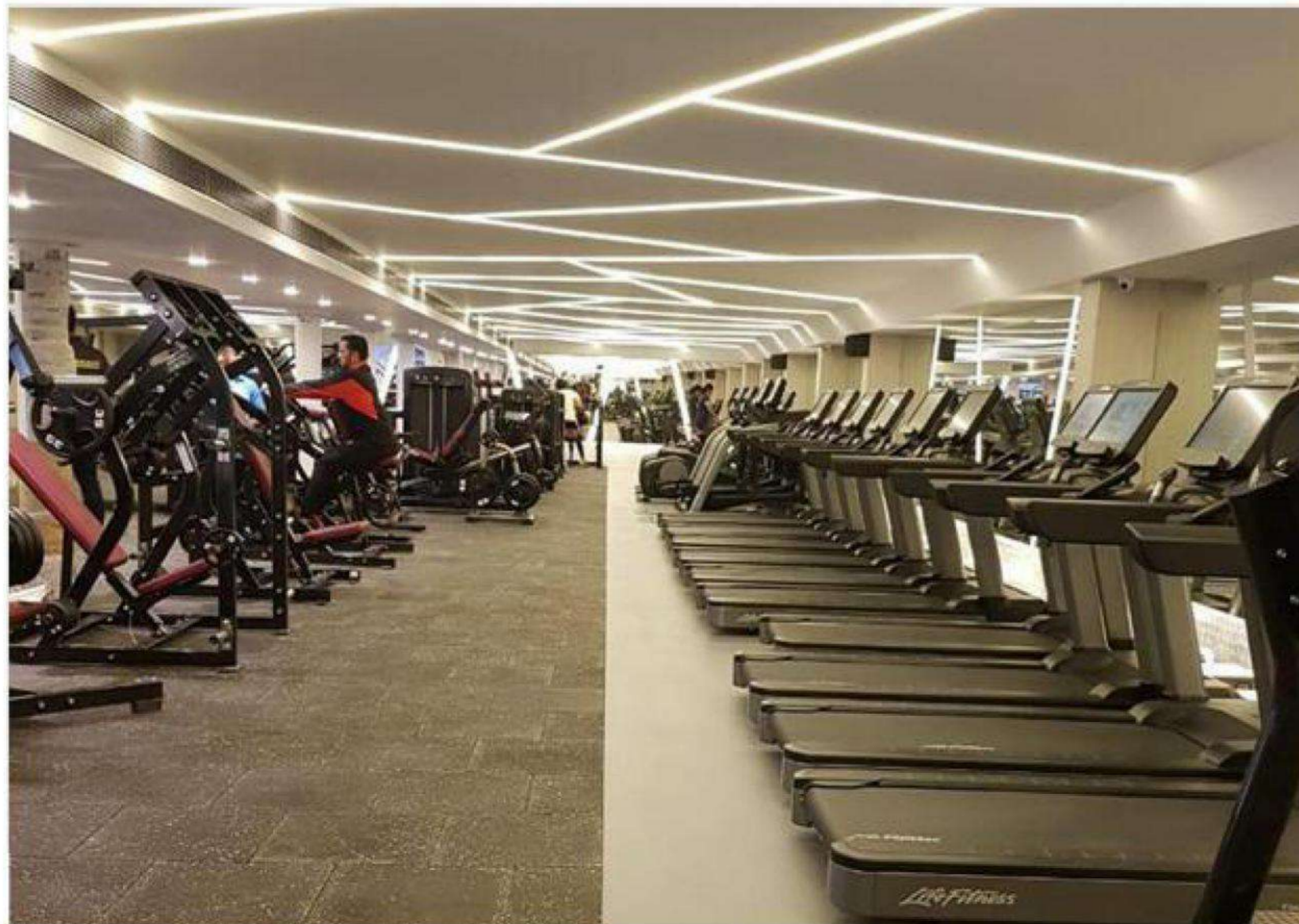


- ✓ **Classic EPDM rubber tiles** are a type of flooring material commonly used in various applications, including playgrounds, sports facilities, gyms, and outdoor recreational areas. EPDM stands for Ethylene Propylene Diene Monomer, which is a synthetic rubber known for its durability, resilience, and weather resistance.

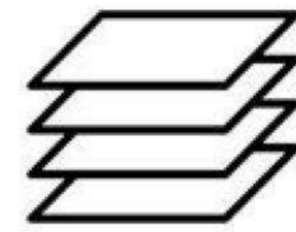
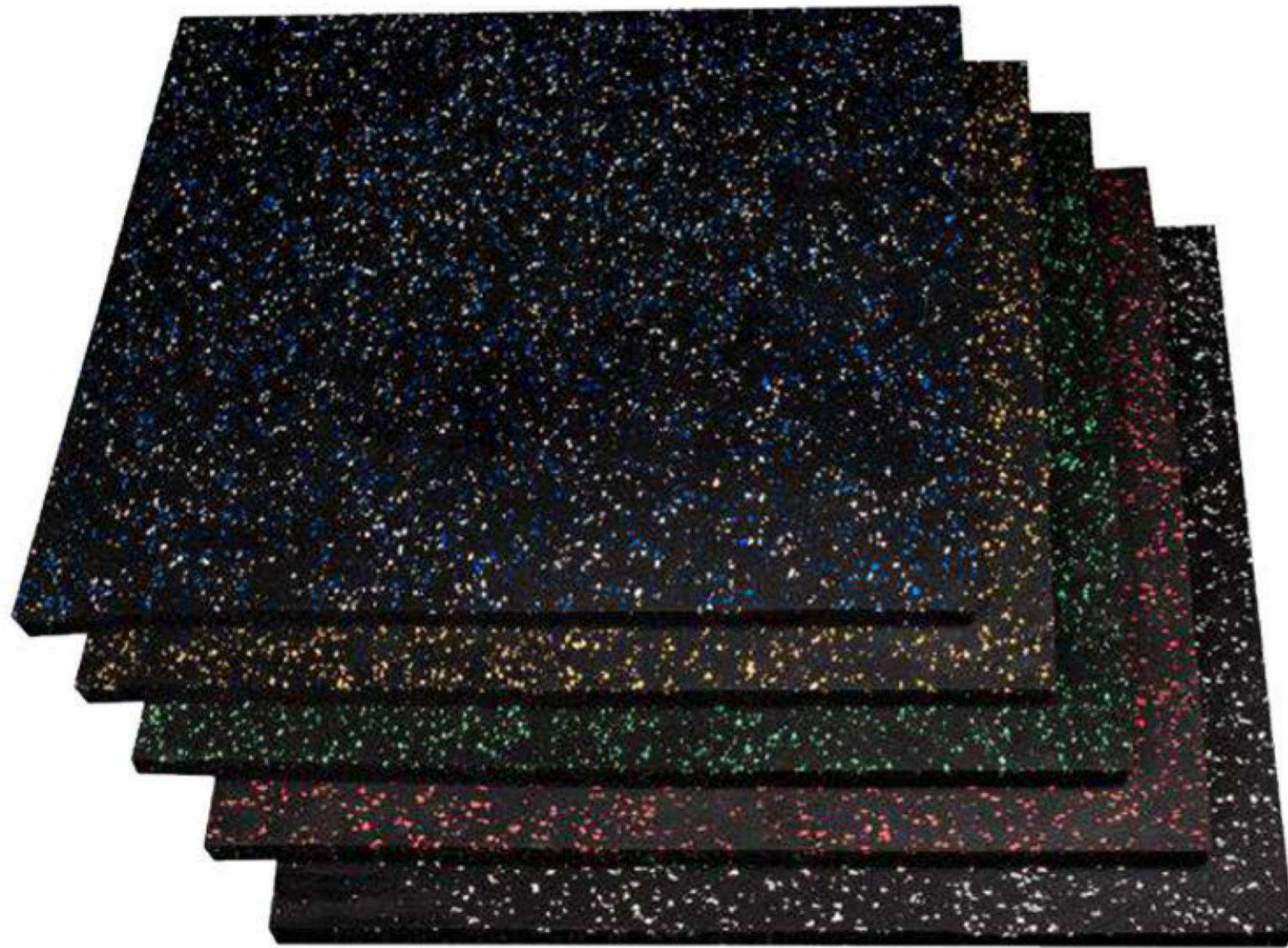
APPLICATION

- ✓ **Uses:** gyms, fitness centers, sports facilities, play area and other high-traffic areas
- ✓ **Benefits:** Noise reduction, Slip resistance, Shock absorption, long-lasting performance, Easy maintenance.

OUR PROJECTS



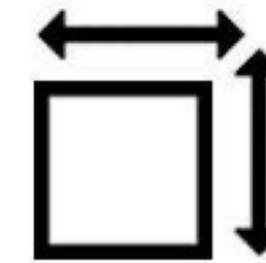
LAMINATED RUBBER TILES



Thicknesses :- 10mm, 15mm, 20mm, 25mm
30mm, 35mm, 40mm & 50mm.

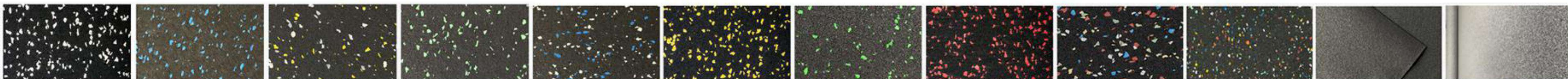


Size :- 20X20 Inch (508X508mm) & 1mtr X 1mtr



Area Coverage :- 2.77sqft per tile

AVAILABLE COLOURS

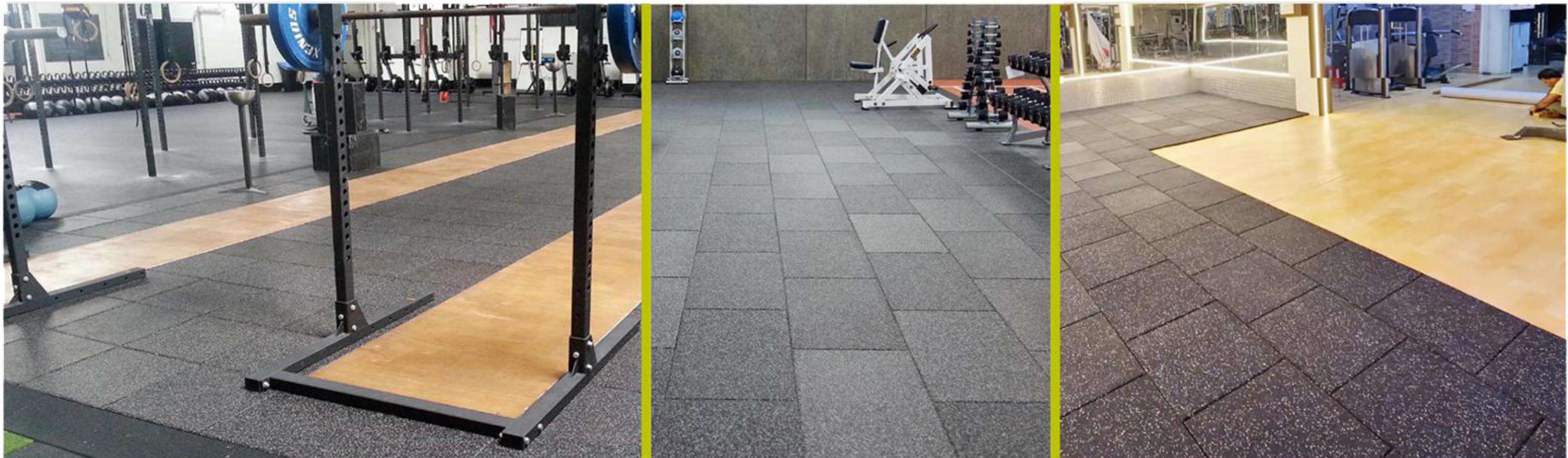


- ✓ **Laminated rubber tiles** are a versatile and durable flooring option for gyms and homes. Designed to withstand heavy foot traffic and high-impact activities, they offer excellent durability and resilience.

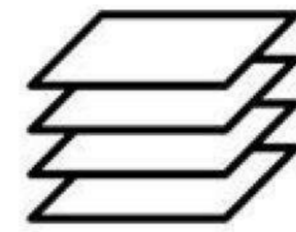
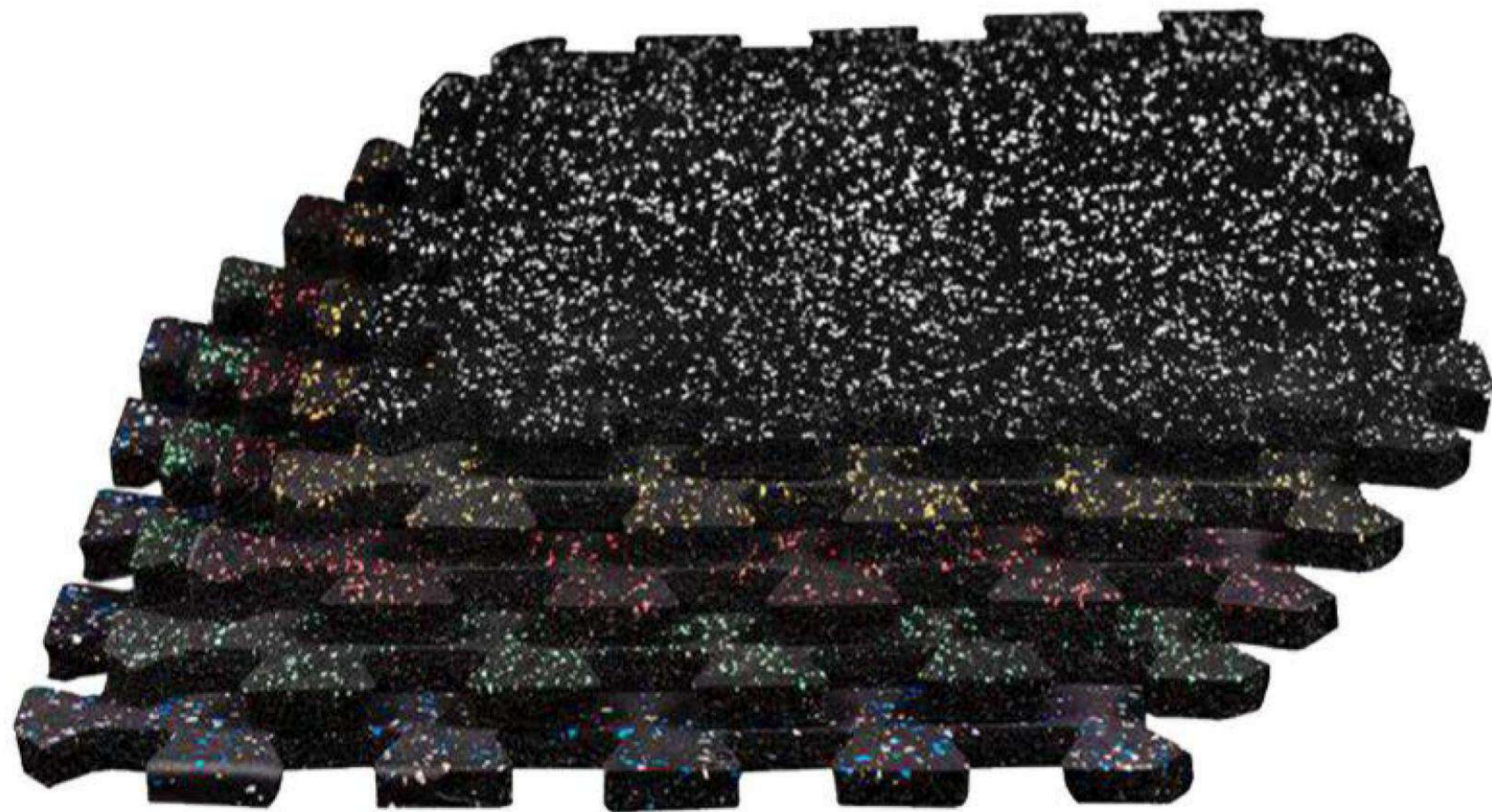
APPLICATION

- ✓ **Uses:** gyms, fitness centers, sports facilities, play area and other high-traffic areas
- ✓ **Benefits:** Noise reduction, Slip resistance, Shock absorption, long-lasting performance, Easy maintenance.

OUR PROJECTS



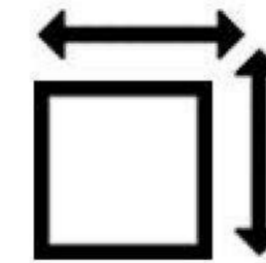
LAMINATED INTERLOCKING RUBBER TILES



Thickness :- 10mm, 15mm, 20mm, 25mm, 30mm, 35mm, 40mm & 50mm.

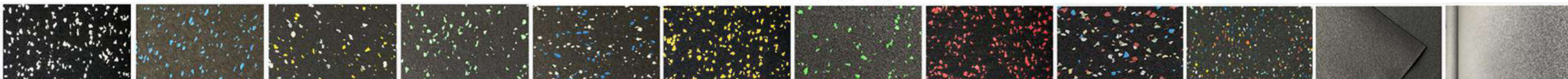


Size :- 20X20 Inch (508X508mm) & 1mtr X 1mtr



Area Coverage :- 2.77sqft per tile

AVAILABLE COLOURS

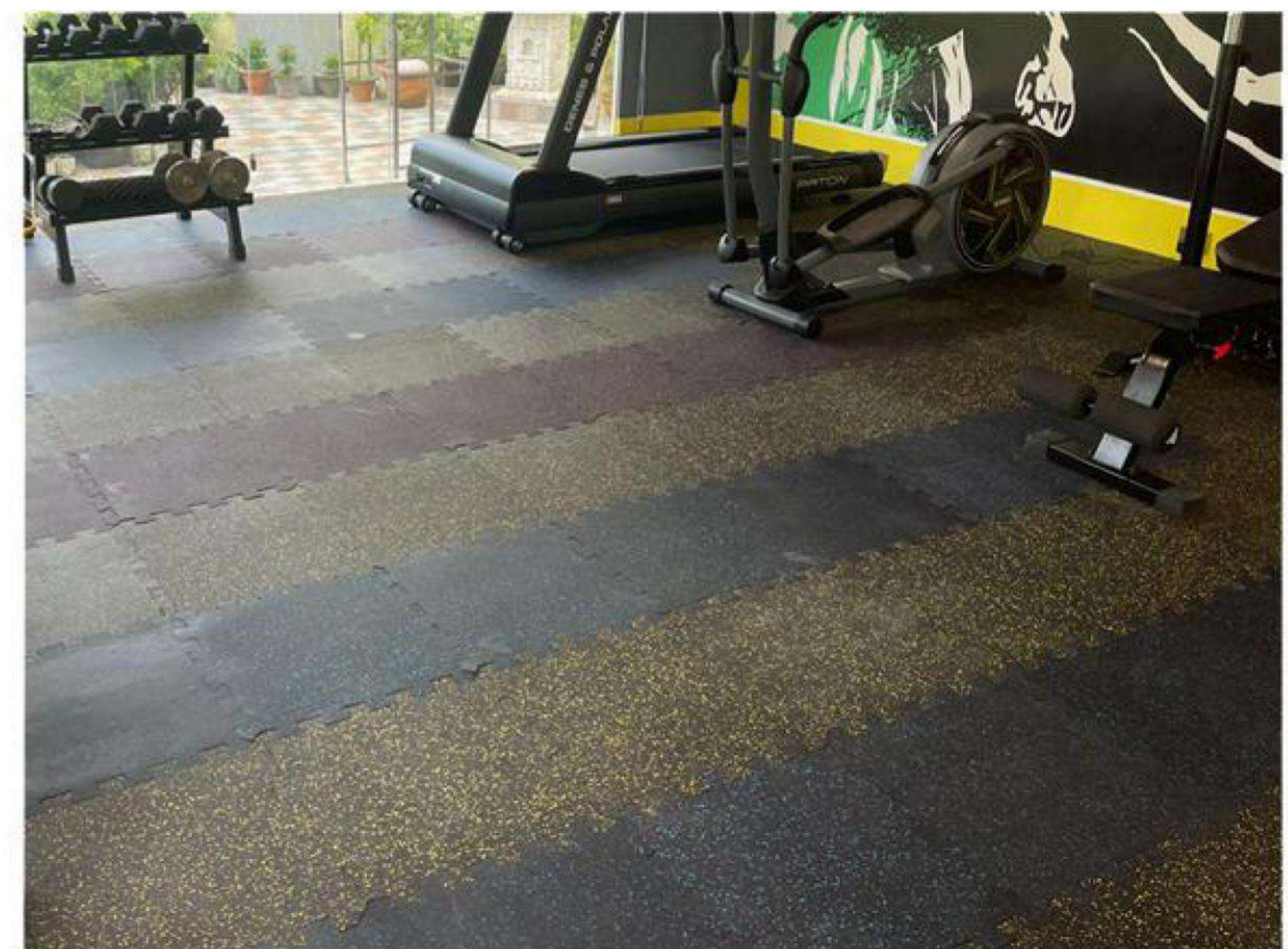
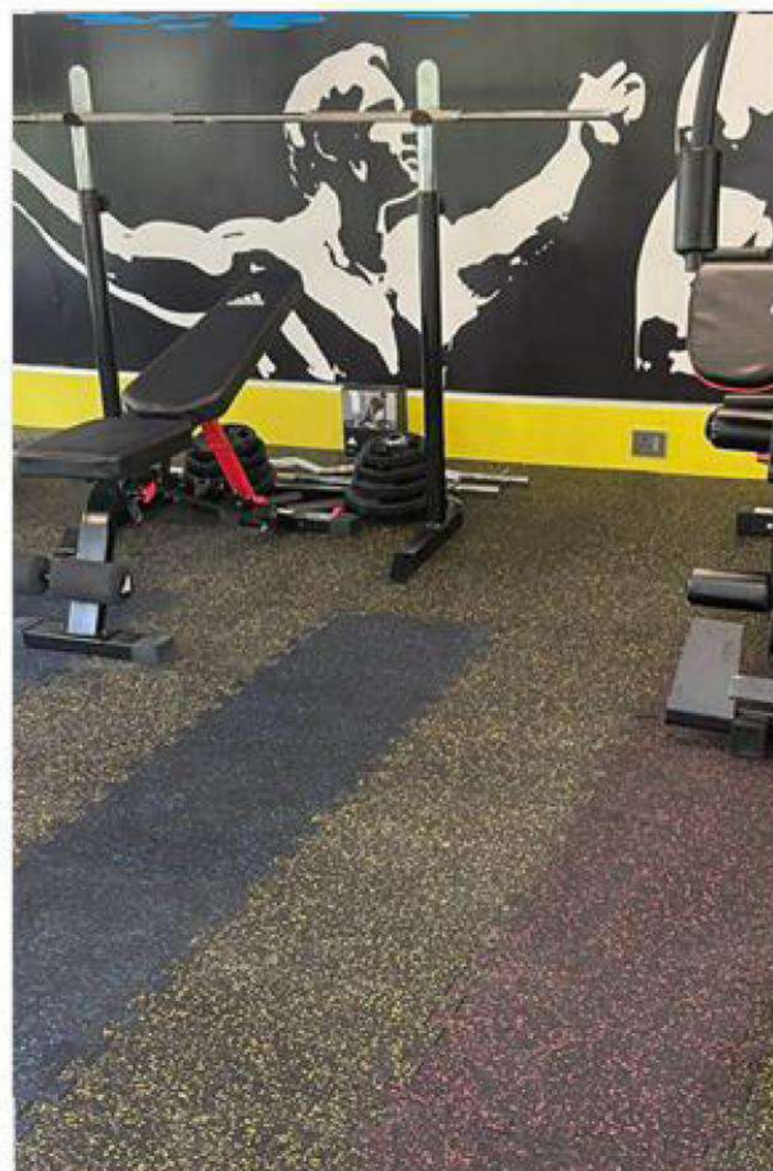
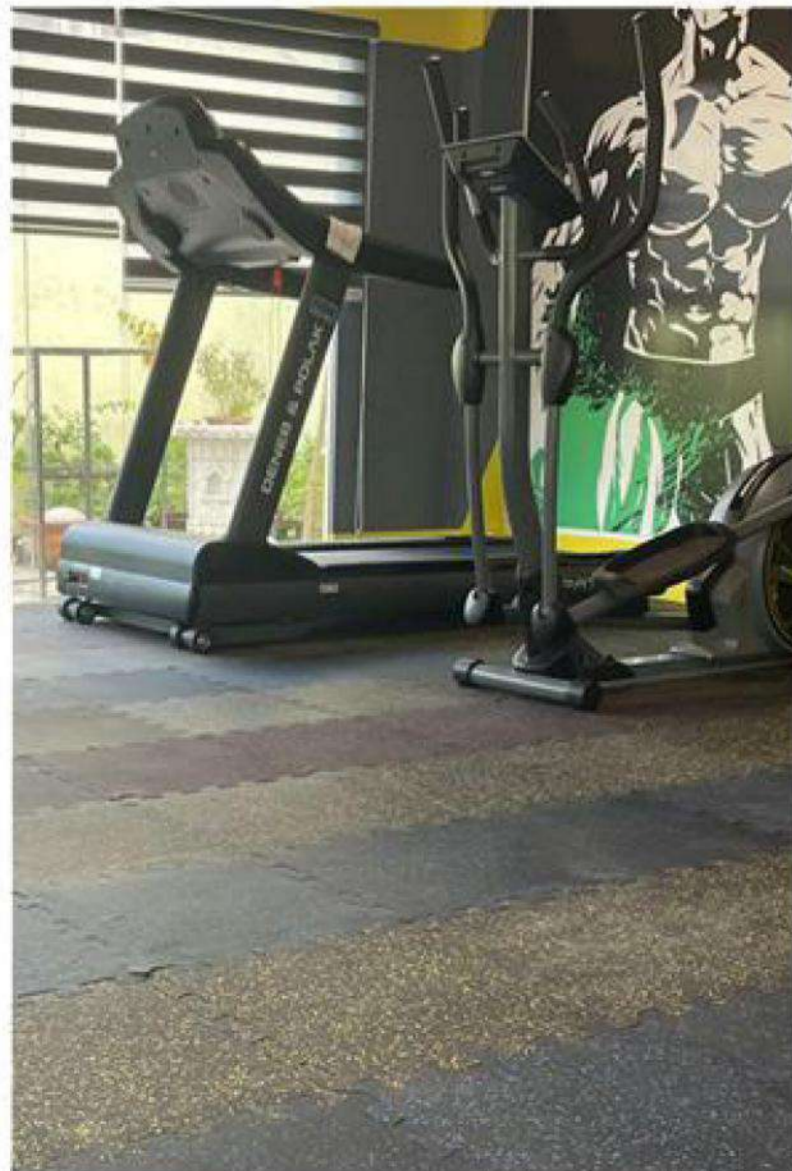


- ✓ **Laminated Interlocking rubber tiles** are an excellent choice for gym and home flooring due to their durability, versatility, and safety features. The combination of the rubber base layer and the laminated top layer creates a flooring option that offers the benefits of both materials.

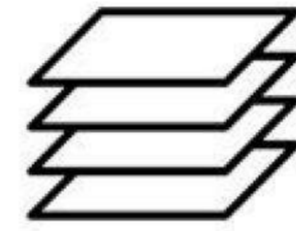
APPLICATION

- ✓ **Uses:** gyms, fitness centers, sports facilities, play area and other high-traffic areas
- ✓ **Benefits:** Noise reduction, Slip resistance, Shock absorption, long-lasting performance, Easy maintenance.

OUR PROJECTS



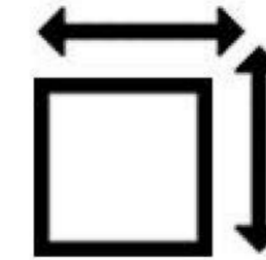
PREMIUM RUBBER TILES



Thicknesses :- 10mm, 15mm, 20mm, 25mm
30mm, 35mm, 40mm & 50mm.

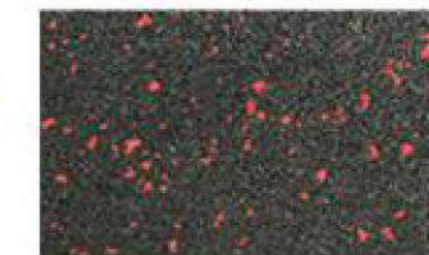
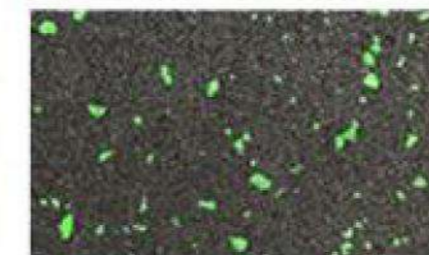
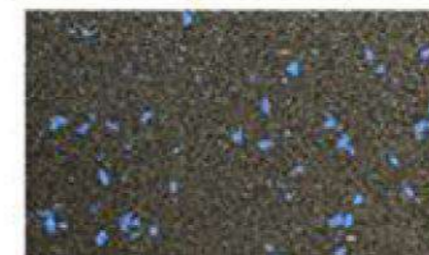
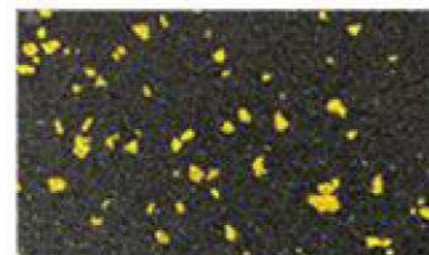
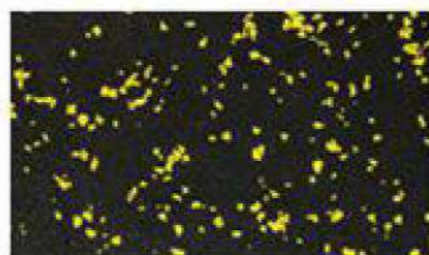


Size :- 20X20 Inch (508X508mm)



Area Coverage :- 2.77sqft per tile

AVAILABLE COLOURS

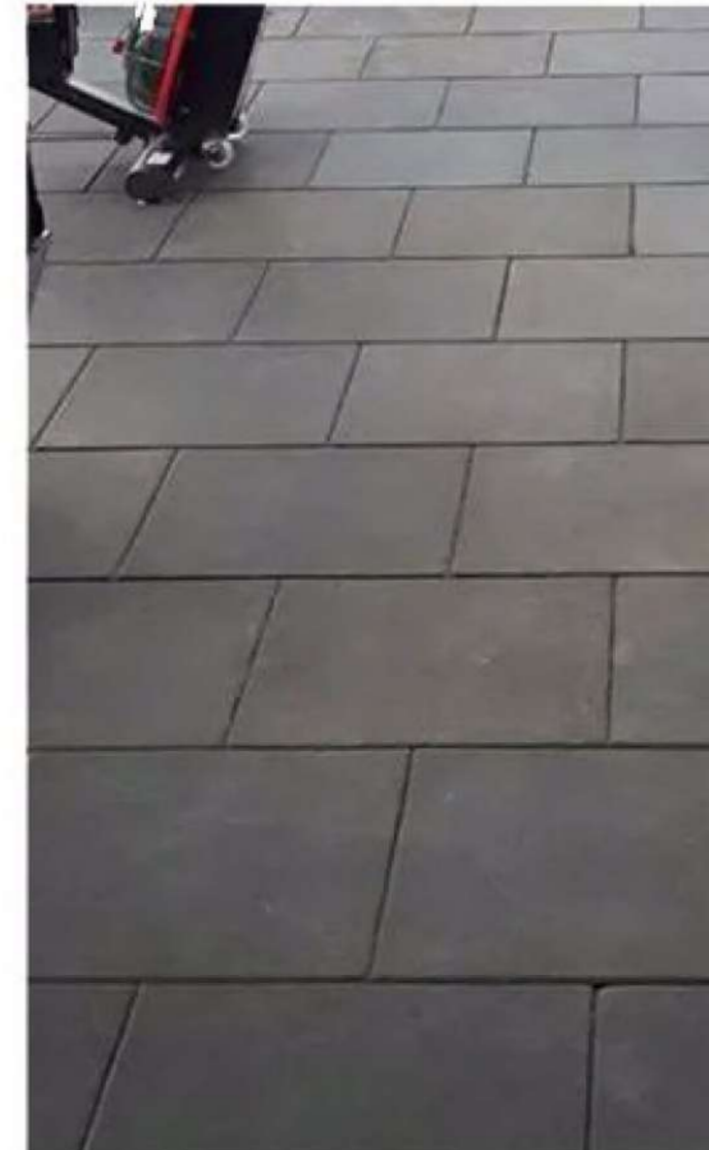
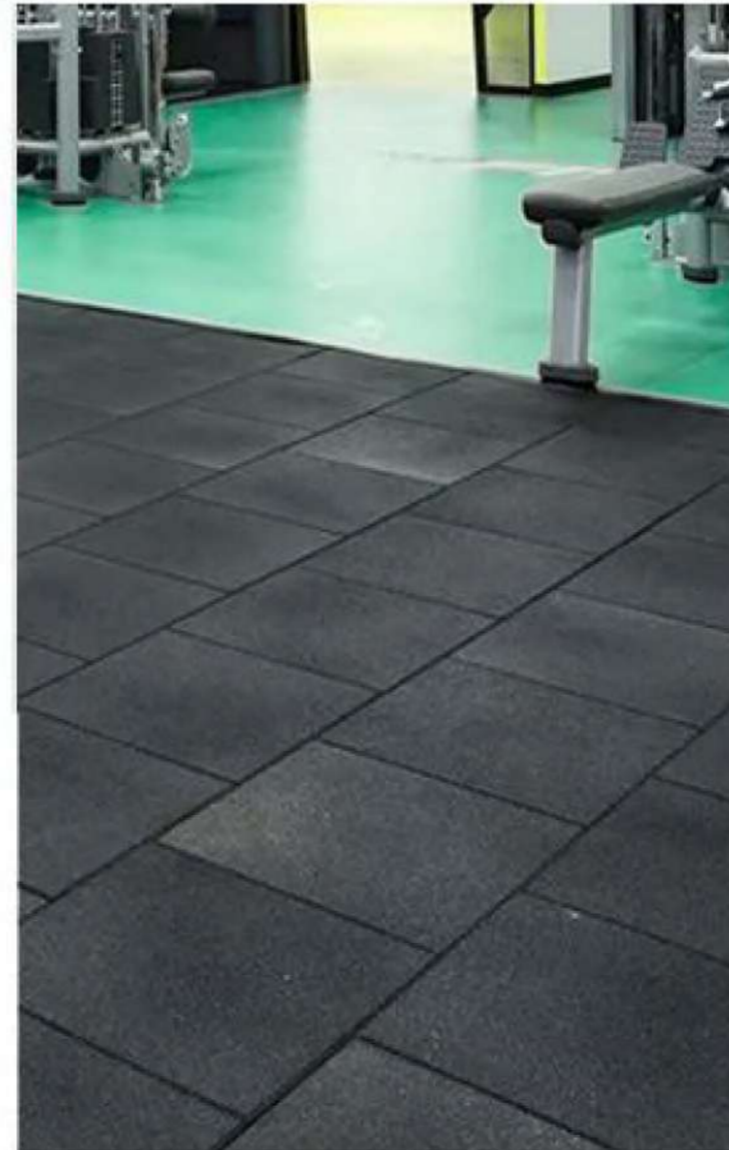
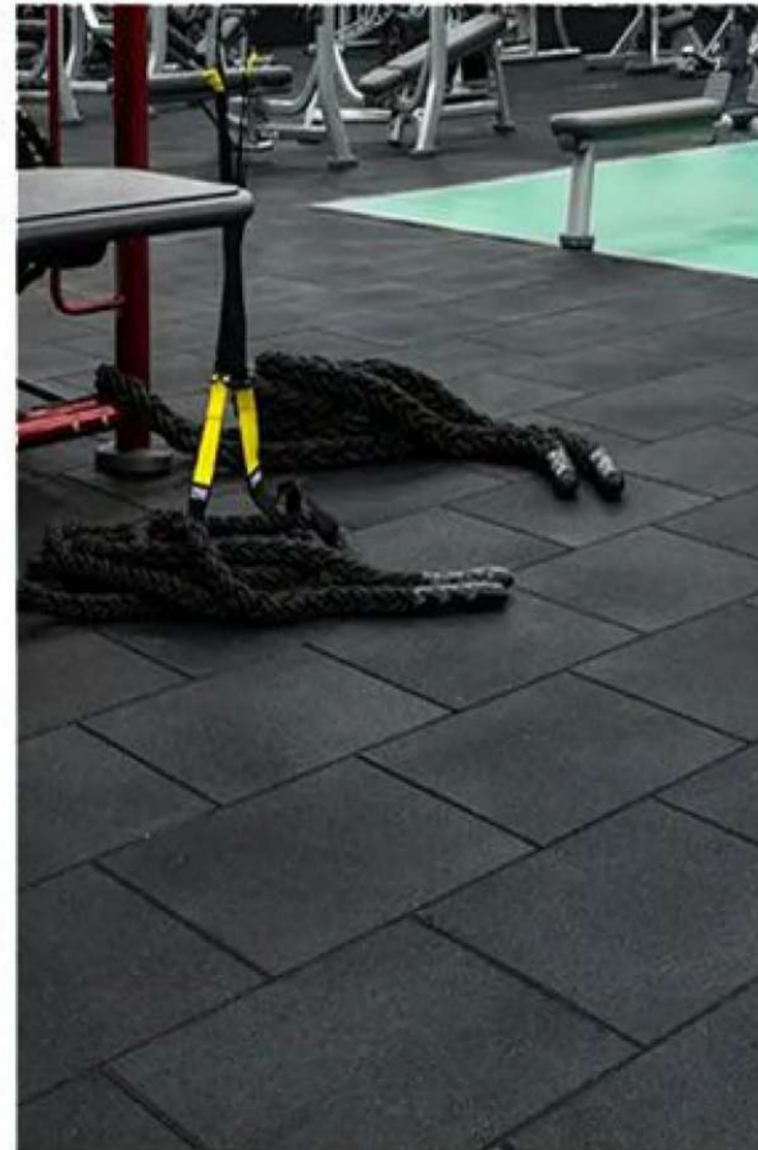


- ✓ **Premium rubber tiles** are also highly slip-resistant, providing a safe and secure surface for both dry and wet conditions. Premium rubber tiles come in a wide range of colors, patterns, and thicknesses, allowing for customization and design flexibility.

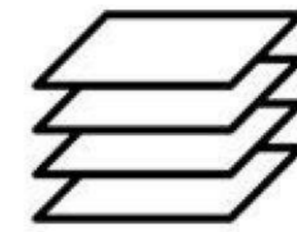
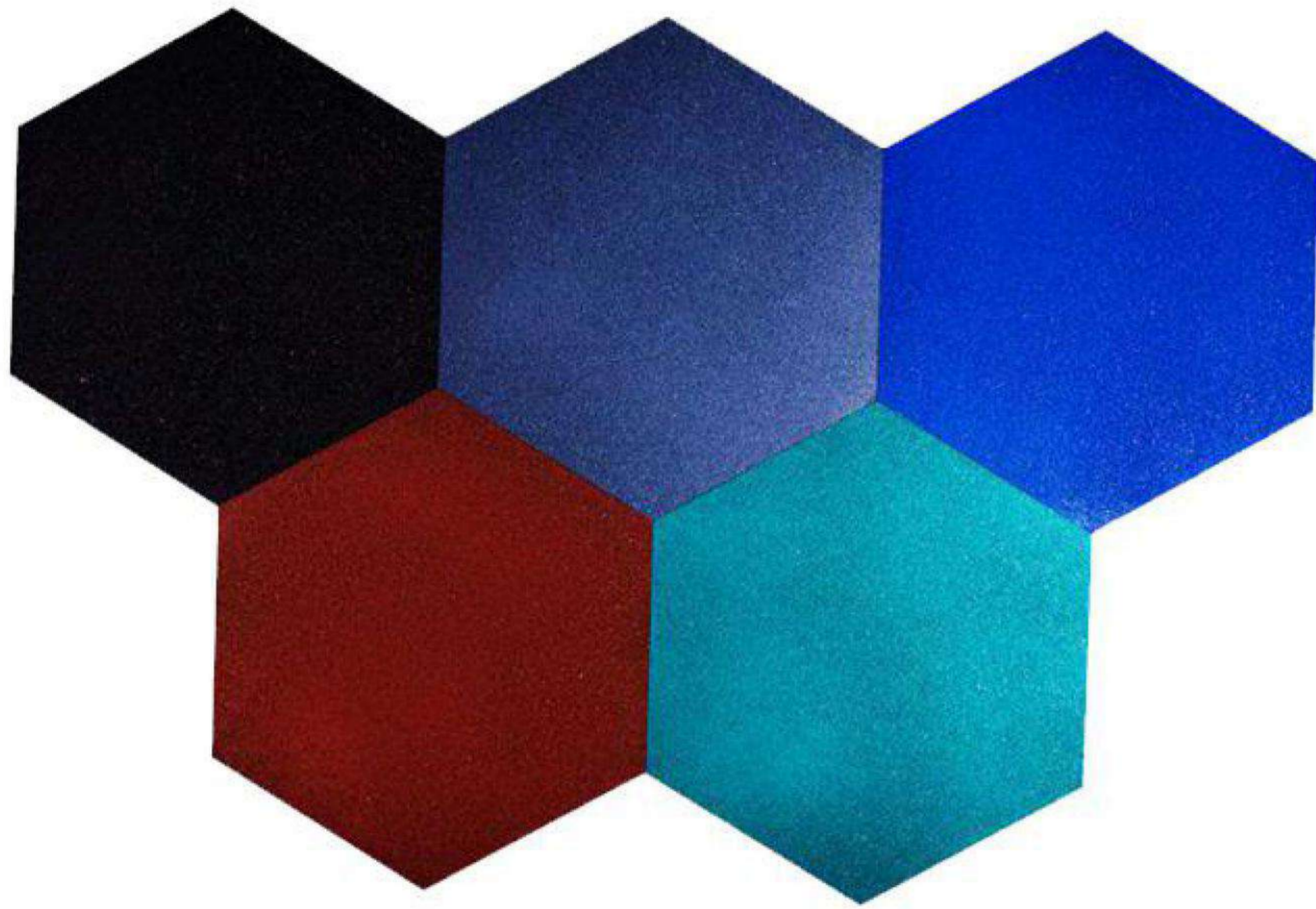
APPLICATION

- ✓ **Uses:** gyms, fitness centers, sports facilities, play area and other high-traffic areas
- ✓ **Benefits:** Noise reduction, Slip resistance, Shock absorption, long-lasting performance, Easy maintenance.

OUR PROJECTS



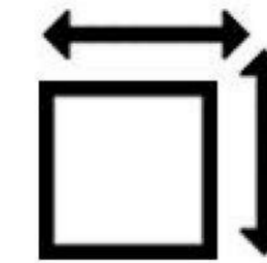
HEXAGON RUBBER TILE



Thicknesses :- 10mm & 15mm



Size :- 1.99 sqft



Area Coverage :- 1.99 sqft per tile

AVAILABLE COLOURS

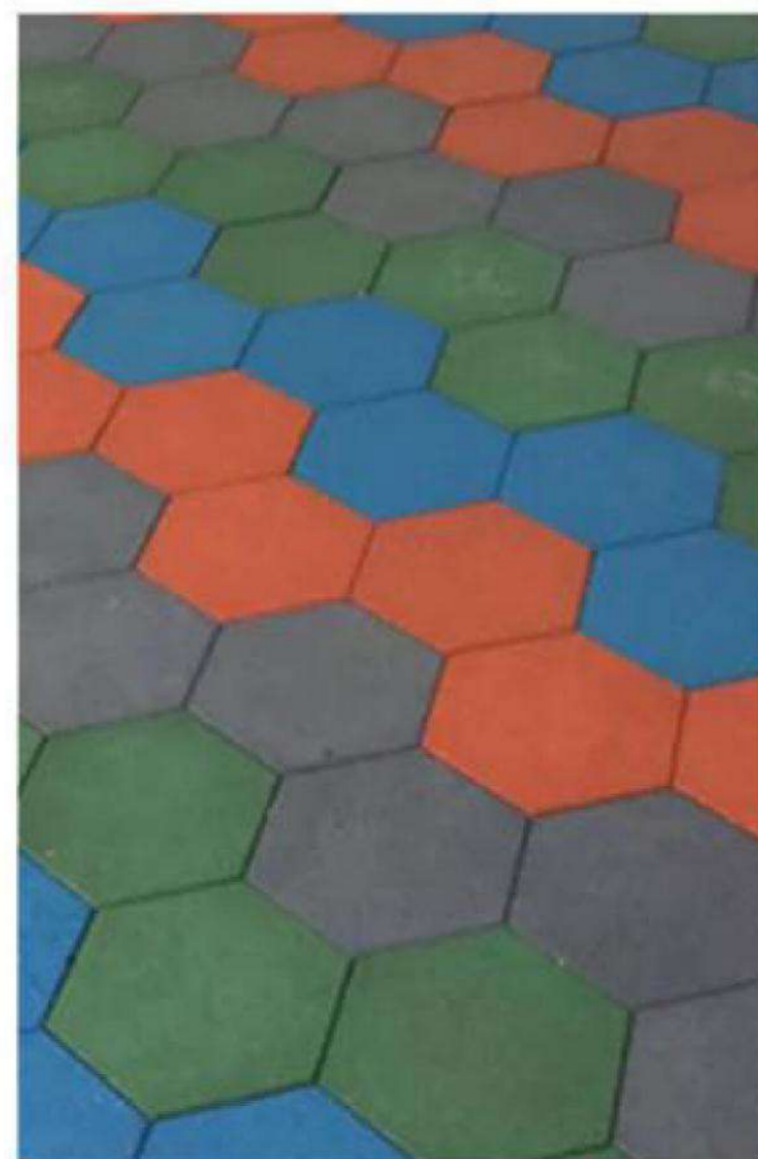
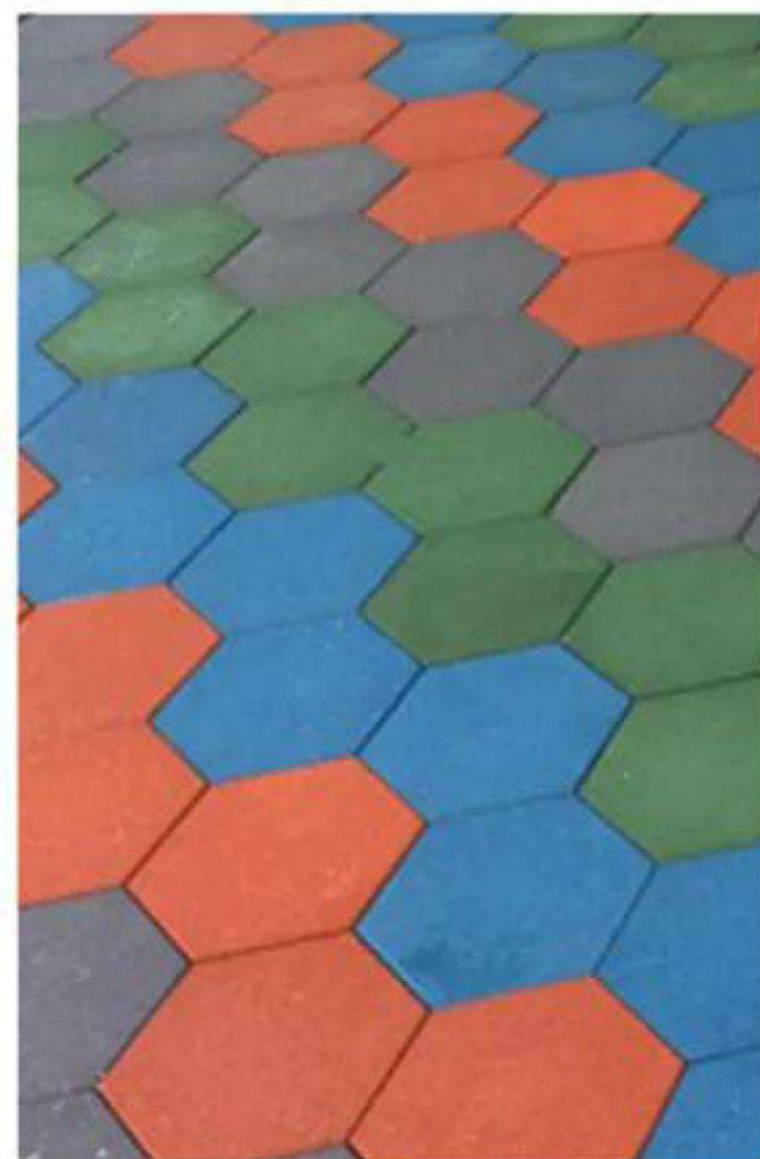


- ✓ **Hexagonal rubber tiles** are an excellent choice for safety flooring applications. These tiles combine the benefits of rubber flooring with the unique design and added safety features of their hexagonal shape.

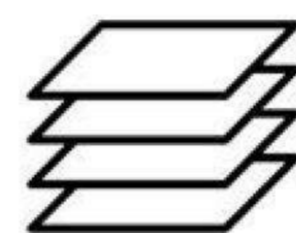
APPLICATION

- ✓ **Uses:** gyms, fitness centers, sports facilities, play area and other high-traffic areas
- ✓ **Benefits:** Noise reduction, Slip resistance, Shock absorption, long-lasting performance, Easy maintenance.

OUR PROJECTS



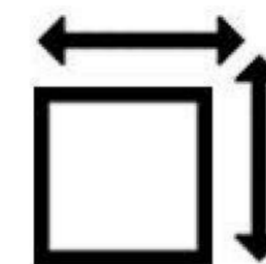
BALLISTIC RUBBER TILE



Thicknesses :- 30mm, 35mm, 40mm & 50mm

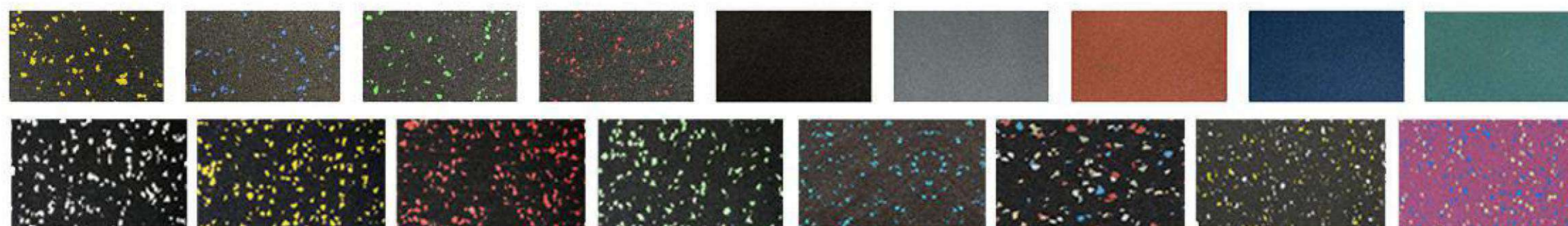


Size :- 20 X 20 Inch (508 X 508mm)
& 1mtr X 1mtr



Area Coverage :- 2.77 sqft per tile

AVAILABLE COLOURS



- ✓ **Ballistic rubber tiles** are a specialized type of flooring designed to provide exceptional ballistic resistance and durability. These tiles are commonly used in shooting ranges, military training facilities, and law enforcement environments where firearm training and ballistic protection are essential.

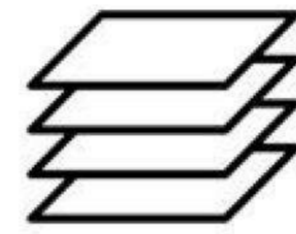
APPLICATION

- ✓ **Uses:** These tiles are commonly used in shooting ranges, military training area, law enforcement facilities, and other environments where firearms training and ballistic protection are required.
- ✓ **Benefits:** Noise reduction, Slip resistance, Shock absorption, long-lasting performance, Easy maintenance.

OUR PROJECTS



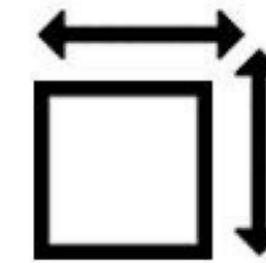
EPDM SANDWICH RUBBER TILES



Thicknesses :- 15mm, 20mm, 25mm, 30mm, 35mm, 40mm & 50mm

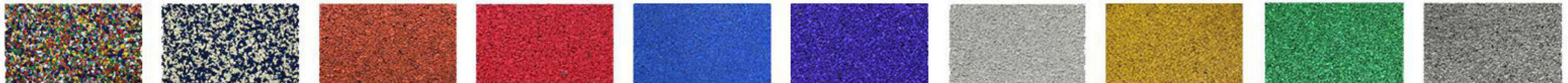


Size :- 20 X 20 Inch (508 X 508mm)



Area Coverage :- 2.77 sqft per tile

AVAILABLE COLOURS

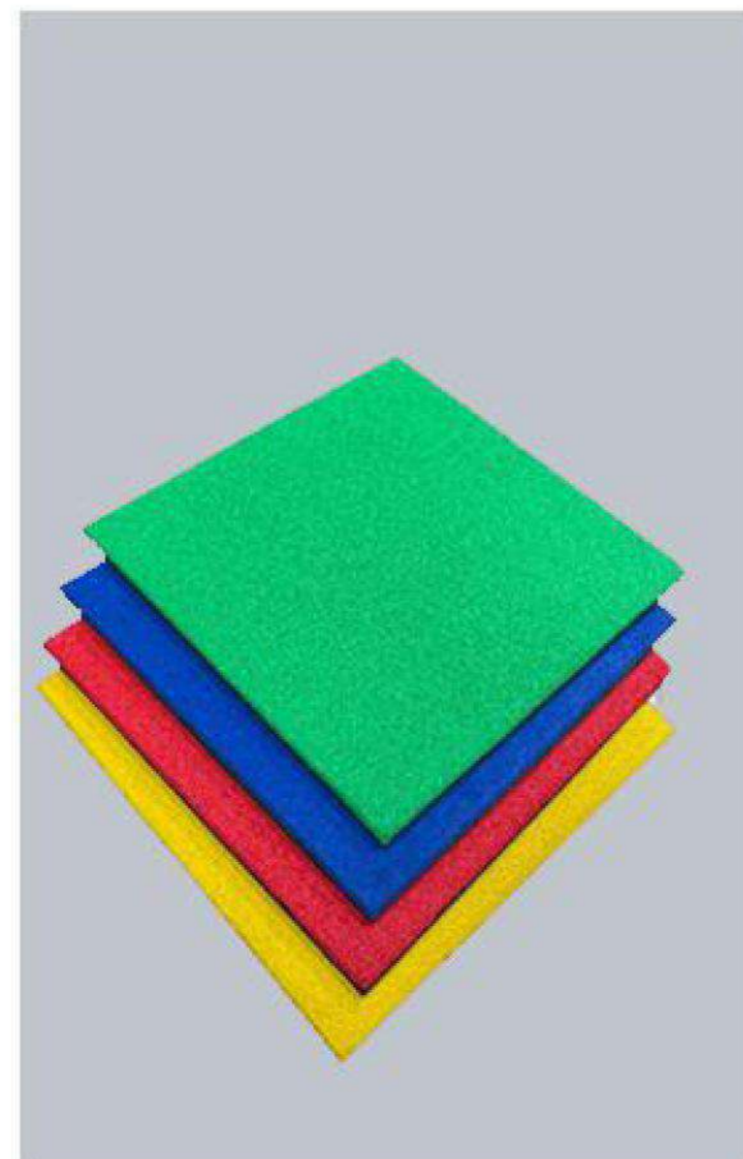
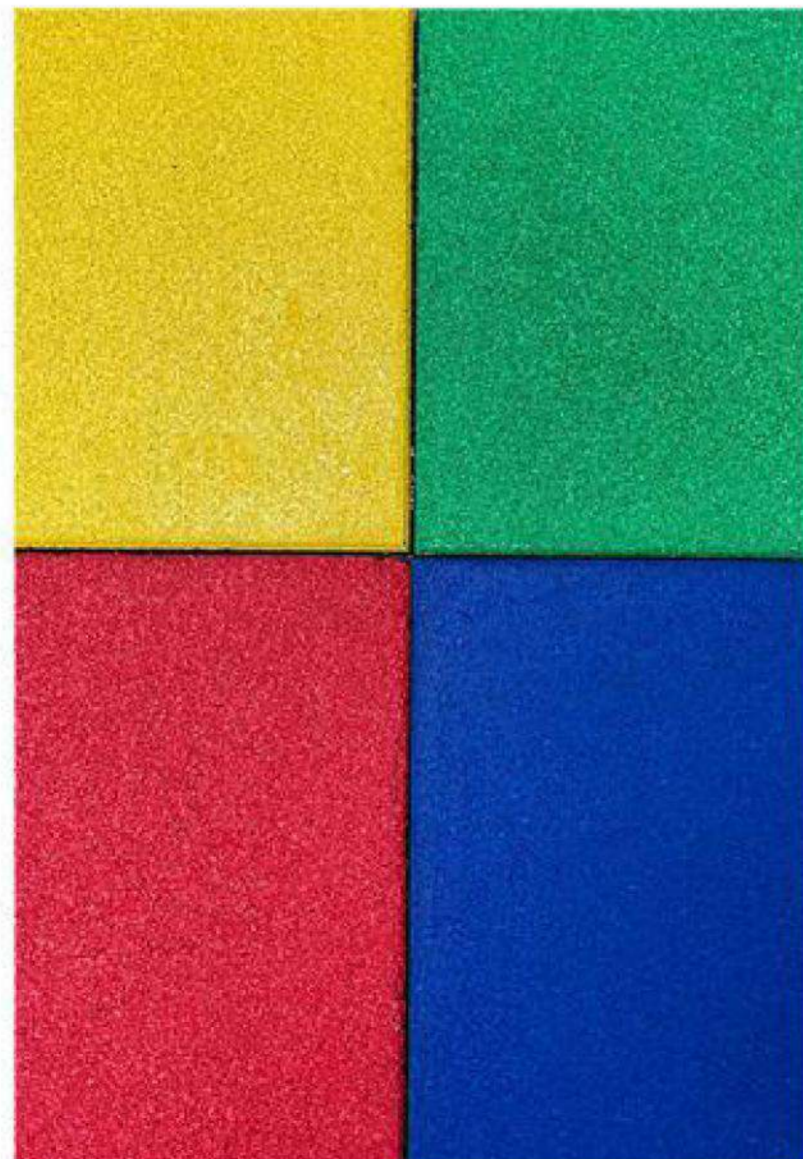


- ✓ **EPDM (Ethylene Propylene Diene Monomer)** sandwich rubber tiles are a type of flooring material commonly used in various applications, including playgrounds, sports facilities, gyms, and outdoor recreational areas.

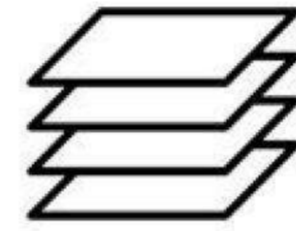
APPLICATION

- ✓ **Uses:** Play area, gyms, fitness center, sports facilities and other high-traffic areas.
- ✓ **Benefits:** Noise reduction, Slip resistance, Shock absorption, long-lasting performance, Easy maintenance.

OUR PROJECTS



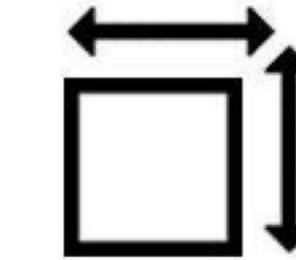
100% EPDM LAMINATED RUBBER TILES



Thicknesses :- 15mm, 20mm, 25mm, 30mm, 35mm, 40mm & 50mm



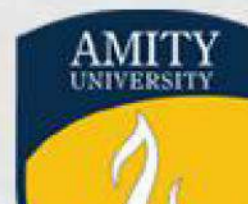
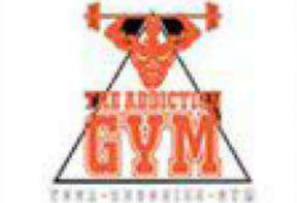
Size :- 20X20 Inch (508X508mm) & 1mtr X 1mtr



Area Coverage :- 2.77sqft per tile

OUR CLIENTS

WHO MAKES US PROUD





OFFICE ADDRESS

2701, Prime Towers
Business Bay Dubai



+971 55 224 4380



WAREHOUSE ADDRESS

Warehouse No . 12 Plot
No : 5999-1116Jebel Ali
Industrial Area 1



WWW.FABFLOORINGS.AE

FAB GULF TRADING LLC